

SPRING 2014

A SMALL COLLEGE OF NATIONAL DISTINCTION

# Bethany

TODAY

## Mentoring

Shaping Young Lives

WWW.BETHANYWV.EDU

## PRESIDENT'S MESSAGE

# THE ENDURING GIFT OF MENTORING

IN THIS ISSUE of *Bethany Today*, we focus on a topic that I am sure all Bethanians know well — mentors and mentoring.

All of us have benefited from influential mentors in our lives. Whether they are parents, teachers, coaches, friends, colleagues or employers, mentors convey lasting gifts to those who are fortunate to be the recipients. Such gifts can be life-changing, leading to unexpected results, new jobs and careers, different ways of looking at the world and one's own role in it. Being mentored also is often the inspiration for giving back, sharing with others what has enriched our experience.

In my mind, there is a distinction between serving as a positive role model and as a mentor. Although both are valuable and needed, "mentor" has the connotation of something highly personal, adapted to the individual, and specialized for one's unique circumstances. It is motivational and understanding, realistic and sympathetic, compelling and forgiving. It goes beyond preparing for a career; it goes to the heart, and art, of living. Its true impact can be lifelong.

Like one's best friends, mentors may be few, but their influence is profound. Most of all, mentors understand that our lives are works in progress, uneven, often unsuccessful, but not without significance. And they know that beyond mere advice, what we often need most is commitment. I am reminded of a quote attributed to Winston Churchill: "Success is not final, failure is not fatal: it is the courage to continue that counts." Mentors know that lesson by heart, and they inspire us to embrace it—often when we need to do so the most.



Bethany College would not be the transformational institution that it is without mentors who can be found throughout the campus community. Our professors and coaches are renowned for their total commitment to students' success. Administrative staff members offer assistance, guidance and encouragement as well. And I cannot say enough about our trustees, alumni and other Bethany friends who are extraordinarily generous with their time, talents, professional networks and financial program support, opening doors for many of our students. Talk to any of our graduating seniors, and you will hear of numerous instances in which a single individual, among others, made all the difference in their journey into the world. We can be proud of the tradition of mentoring at our College, and the rich rewards that it brings not only to our students but to all of us.

Although we don't always do enough to recognize Bethany's mentors, and undoubtedly their ranks include many unsung heroes, features editor Dr. Mort Gamble profiles several members of our campus community who understand well the benefits of mentoring. They include two students, four faculty and two alumni whose lives have been changed by mentors and who are now influencing the lives of others. Their stories speak to Churchill's statement about the nature of success and the importance of personal progress. All are distinguished by their attitudes as much as their actions.

I have the honor of working closely with all of those profiled; all have earned distinction for themselves and for Bethany College, and each of them

has something significant to say. Their views about their major fields or chosen professions, technology, the educational process and other topics reflect informed judgments and closely held values. As I read the features, I was also struck by how humble these individuals are, especially as they consider the responsibilities they have as mentors toward others.

We're confident you will enjoy and be inspired by their stories, and will benefit from the many other updates and announcements to be found within this edition of our magazine. I invite you to write to us about the mentors, here at Bethany or elsewhere, who have figured prominently in your own life. And, as always, we thank you for your faithful support of our mission that fosters valued leadership in this and so many vital ways from our mountaintop campus, *A Small College of National Distinction*.

We would be remiss if we didn't note the recent passing of some very special Bethanians: Marjorie Wilt Bell '40; Theo Christman '52; former Trustee Dr. Robert Renner '48; Sally Schreiber Bado '50 (mother of Trustee Ken Bado '77); Professor Emeritus Dr. Robert Myers '54, and members of the Bethany College Sports Hall of Fame John Palafoutas '55; Lawrence Wineke '75; Peter Cassel '70 and Richard Lash '57. Grateful that they touched the life of Bethany in so many important ways, we extend our prayers and sympathy to the families and friends of these distinguished members of the College community.

A handwritten signature in dark ink that reads "Scott D. Miller". The signature is fluid and cursive, with the first letters of the first and last names being capitalized and prominent.

Scott D. Miller  
*President of the College*



*Bethany Today* is a biannual publication of Bethany College. For additional copies of this publication, or more information on the College, please call (304) 829-7221.

**Editor**

Rebecca (Guinan) Rose '01

**Features Editor**

Mort Gamble

**Contributing Editors**

Alex Koscevic

Jerrod Plate

**Contributing Photographers**

Martin Santek Photography

**Design + Production**

MSK Partners, Inc.

**Issue Date**

Spring 2014

Printed in the U.S.A.

Address all correspondence concerning this magazine, including class notes, submissions and address changes to:

OFFICE OF ALUMNI AND  
PARENT RELATIONS  
**BETHANY COLLEGE**

PO Box 419

Bethany, West Virginia 26032

(304) 829-7411

or via e-mail to: [alumni@bethanywv.edu](mailto:alumni@bethanywv.edu)

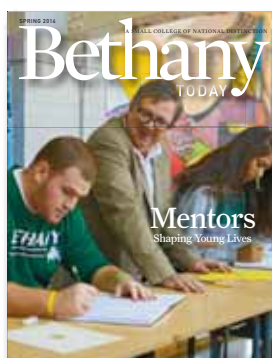
[www.bethanywv.edu/alumni/news](http://www.bethanywv.edu/alumni/news)

Would you like to receive alumni news and event notices via e-mail? Please be sure to update your contact information with the Office of Alumni and Parent Relations at (304) 829-7411 or via e-mail at [alumni@bethanywv.edu](mailto:alumni@bethanywv.edu).

No part of this publication may be reproduced without the prior permission of the editor.

Bethany admits students of any race, color, sex, handicap and national or ethnic origin.

©Bethany College 2014



## SPRING 2014

### ON THE COVER

Prof. Kenn Morgan,  
Professor of Fine Arts in  
the Jennie Steindorf Renner  
Chair of Fine Arts and  
Curator of Permanent Art  
Collections and Director of  
the Renner Art Gallery, works  
with senior Zach Burton  
and junior Breana Harris  
during a Drawing I class.

# CONTENTS

**MENTORING** is defined as an experienced and trusted adviser in a company, college, or school who trains and counsels new employees or students. In this special issue of *Bethany Today*, we look at how various leaders have risen to the occasion, and the results of their newly created experiences.

08 Faculty

16 Students

20 Alumni

## DEPARTMENTS

04 Noteworthy

24 Sports

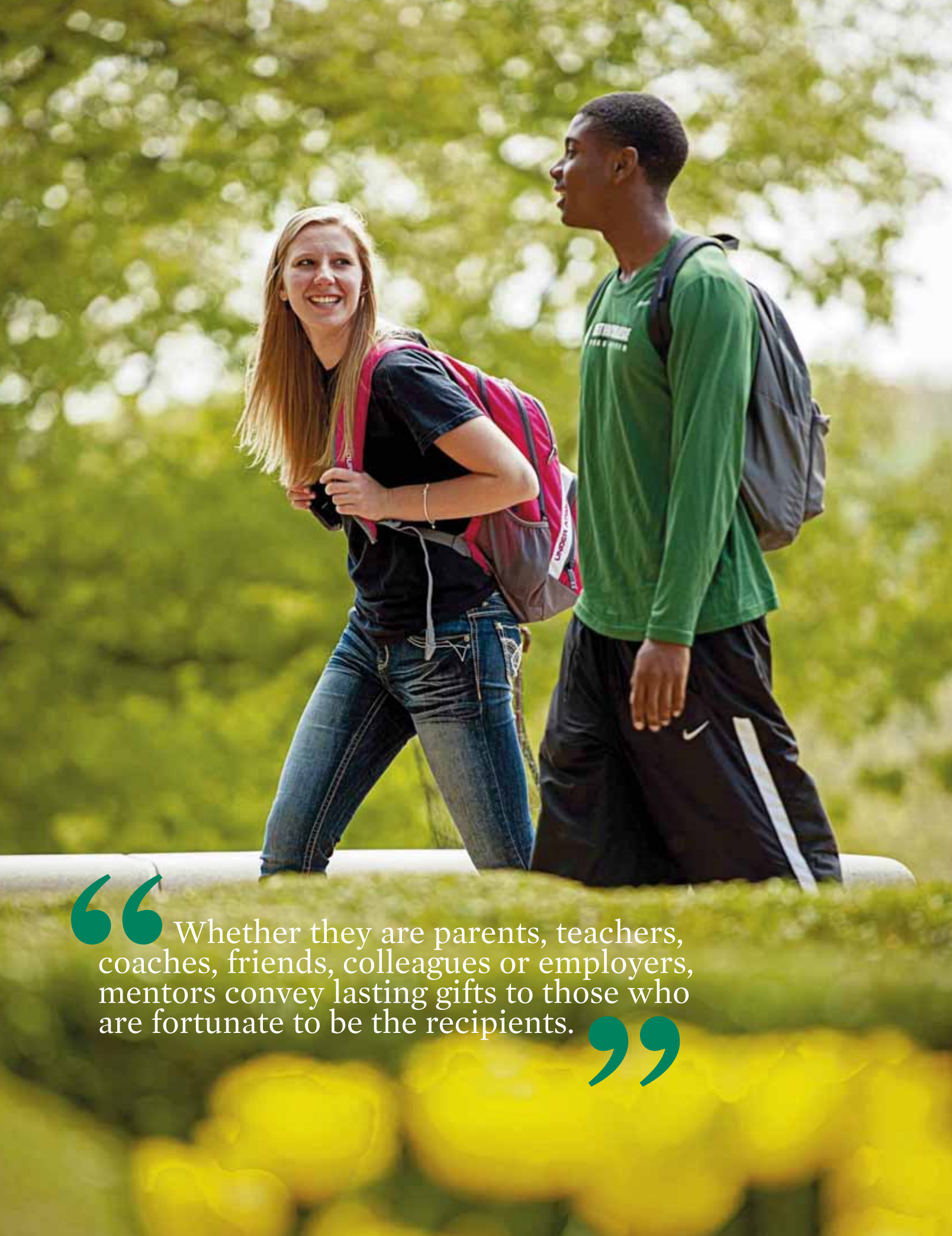
36 Class Notes



ON THE WEB **BETHANYWV.EDU**

LATEST EVENTS  
SPORTS UPDATES  
AND MUCH MORE

A SMALL COLLEGE OF NATIONAL DISTINCTION



“Whether they are parents, teachers, coaches, friends, colleagues or employers, mentors convey lasting gifts to those who are fortunate to be the recipients.”

## BETHANY COLLEGE, A SMALL COLLEGE OF NATIONAL DISTINCTION, WAS FOUNDED MARCH 2, 1840.

FOR MORE THAN 170 YEARS, Bethany College has been a highly contemporary institution based in the tradition of the liberal arts. The College offers a wide array of studies, awarding Bachelor of Science and Bachelor of Arts degrees in more than 25 fields of study, many with options for emphasis. Students also have the option of including one or more optional minors as part of their programs.

The College's program of liberal arts education prepares students for a lifetime of work and a life of significance. Bethany places particular emphasis on leadership and incorporates pre-professional education in dentistry, engineering, law, medicine, physical therapy, public administration, theology and veterinary medicine.

Bethany's 1,300-acre campus is located in the northern panhandle of West Virginia in the foothills of the Allegheny Mountains. Pittsburgh, America's Most Livable City, is a 50-minute drive from campus. Wheeling, W.Va.; Washington, Pa.; and Steubenville, Ohio are less than a half-hour away.

Founded by Alexander Campbell, who provided the land and funds for the first building and served as the first president, Bethany has been a four-year private liberal arts college affiliated with the Christian Church (Disciples of Christ), since its inception. This religious body, of which Campbell was one of the principal founders, continues to support and encourage the College, but exercises no sectarian control. Students from virtually every religious community attend Bethany.

### VALUES

Bethany College is an academic community founded on the close interaction between students and faculty in the educational process. Bethany College values intellectual rigor and freedom, diversity of thought and lifestyle, personal growth within a community context, and responsible engagement with public issues. Its programs are designed to:

- engage the mind through emphasis on discipline in thinking, motivation in the search for knowledge, and acquisition of the intellectual resources for a lifetime of learning
- embolden the spirit through the opportunity for intellectual challenge, collaborative enterprise, athletic competition, artistic expression, personal growth, and meaningful work
- enlarge the world through exposure to the abundant diversity of thought and lifestyle of the human community, support for personal engagement with societies and cultures different from one's own, and commitment to service.

### Senior Administration

Dr. Scott D. Miller  
*President of the College*

Sven de Jong  
*Senior Vice President*

Dr. Katrina L. D'Aquin  
*Interim Vice President for Academic Affairs*

Eileen Greaf  
*Vice President for Finance*

Jerry Stebbins  
*Dean of Students*

### Center for Institutional Advancement

Dr. Scott D. Miller  
*President of the College*

Sven de Jong '95  
*Senior Vice President*

Dr. Mort Gamble  
*Executive Assistant to the President*

Stephanie Gordon  
*Assistant to the President*

Shirley Kemp  
*Director of Advancement Services*

Judy Pyle  
*Executive Assistant for Advancement*

Ashley Kanotz '06  
*Director of Alumni and Parent Relations*

Dr. Larry Grimes, '64  
*Director of Church Relations*

Rebecca Rose '01  
*Director of Communications*

Alex Koscevic  
*Communications Assistant*

Sharon Monigold  
*Director of Bethany Heritage Program and Archivist*

### Officers of the Board of Trustees

Gregory B. Jordan  
*Chair*

Scott D. Miller  
*President of the College*

Robert J. McCann  
*Vice Chair*

John W. Mullen  
*Treasurer*

Janet A. Long  
*Secretary*

### Board of Trustees

Thaddaeus Allen  
Parkersburg, West Virginia

Elizabeth S. Athol  
Pittsburgh, Pennsylvania

George M. "Ken" Bado  
San Francisco, California

Marc B. Chernenko  
Wellsburg, West Virginia

Richard G. Clancy  
San Diego, California

W. Darwin Collins  
Indianapolis, Indiana

James F. Companion  
Wheeling, West Virginia

Scarlett L. Foster  
St. Louis, Missouri

Doug Goin  
Orlando, Florida

Fred M. Harris  
Hagerstown, Maryland

Sy Holzer  
Pittsburgh, Pennsylvania

Joyce Pollack Jefferson  
Wheeling, West Virginia

Asa Johnson  
New York, New York

Gregory B. Jordan  
Pittsburgh, Pennsylvania

Arthur B. Keys, Jr.  
Arlington, Virginia

Linda A. Lewis, M.D.  
New York, New York

Janet A. Long  
Elyria, Ohio

Gayle Connelly Manchin  
Washington, D.C.

G. Daniel Martich  
Pittsburgh, Pennsylvania

Robert J. McCann  
New York, New York

Scott D. Miller, ex-officio  
Bethany, West Virginia

John W. Mullen  
Nashville, Tennessee

G. William Newton  
Nashville, Tennessee

Gary M. Novak  
Pittsburgh, Pennsylvania

G. Ogden Nutting  
Wheeling, West Virginia

Robert Nutting  
Wheeling, West Virginia

Jhamal Robinson  
Los Angeles, CA

Edward J. See  
New Fairfield, Connecticut

William E. Strickland, Jr.  
Pittsburgh, Pennsylvania

Lewis P. Wheeler  
Pittsburgh, Pennsylvania

### Trustees Emeriti

William B. Allen  
Parkersburg, West Virginia

O. John Alpizar  
Palm Bay, Florida

F. D. Bloemeke  
Alpharetta, Georgia

Walter M. Bortz  
Charleston, South Carolina

Neil Christman  
Alpharetta, Georgia

James F. Collins  
Wheeling, West Virginia

Douglas D. Danforth  
Pittsburgh, Pennsylvania

George Davis  
Pasadena, Maryland

Robert W. Ewing, Jr.  
Jackson, Wyoming

Rodney B. Hurl  
Marysville, Ohio

Thomas P. Johnson, Jr.  
Poultney, Vermont

Harry Martens  
Weston, Massachusetts

Eugene Miller  
Boca Raton, Florida

Robert Ponton  
Pittsburgh, Pennsylvania

Ann C. Preston  
San Francisco, California

John W. Renner  
Cleveland, Ohio

William S. Ryan  
Baltimore, Maryland

Robert A. Sandercox  
Lititz, Pennsylvania

Harold R. Watkins  
Indianapolis, Indiana

## BETHANY TODAY

---

# NOTEWORTHY



### Bethany Professor Using Equine Therapy for Children's Behavioral Health

DURING THE FALL, OVMC's Robert C. Byrd Child & Behavioral Health Center had a special guest: Gordon the pony. Gordon and Bethany College associate professor Melanee Sinclair are part of a team that will help children and adolescents admitted to the center.

Sinclair, a Mental Health Specialist and Associate Professor of Social Work at Bethany; Amy McGreal, an Equine Specialist at Oglebay's Stables; and Gordon the pony received special training to be part of the Equine Assisted Growth and Learning Association. EAGALA is an international program, which certifies treatment teams to provide intensive psychotherapy or learning opportunities.



Patients at the Robert C. Byrd Center are dealing with various issues, including suicidal thoughts, hallucinations, depression and anxiety. Through this type of equine therapy, John Antal, Director of Clinical Services at the center, hopes the children and adolescents can better deal with their feelings.

"Kids have a hard time putting feelings into words. But when children are able to relate to an animal, there's just a sigh of relief," Antal said. "They can let their defenses down."

Also, Sinclair said, horses and other equine animals have a unique trait: "They are responsive to what we do," she said. "If we're really nervous, they're really nervous too."

Because of this, the interaction with Gordon may make it easier for therapists to understand how patients are feeling.

### Former College President Releases Book on Bethany

"BETHANY COLLEGE: A LIBERAL ARTS ODYSSEY" by former Bethany College president and noted historian D. Duane Cummins is now available for sale. The book tells stories of Bethany's past, starting with College founder Alexander Campbell. Cummins leads readers on a journey from the late 1800s to now, discussing the College's successes and failures, while putting into perspective the challenges facing the region and country and how Bethany adapted.

Cummins delves into Bethany's history and its contributions to religion and education in America. "Bethany College: A Liberal Arts odyssey" was published by Chalice Press and is available at <http://www.chalicepress.com/Bethany-College-P1306C15.aspx>.

### Five Faculty Members Appointed to Endowed Positions

FIVE MEMBERS of the Bethany College faculty were installed into endowed positions during a formal ceremony in the Academic Parlour of Old Main, according to Dr. Scott D. Miller, President of the College.

Dr. Lisa Reilly, Associate Professor of Chemistry and Chair of the Department of Physical Science and Mathematics, has been named the Goulding-Woolery Professor of Chemistry. Reilly, who was the 2012 recipient of the President's Award for Faculty Excellence, has served on several important College committees and has been an advisor for multiple student organizations.

Dr. Anju Ramjee, Professor of Finance, has been named The John F. and Evelyn Casey Steen Professor of Finance. In 2013, she received the President's Award for Excellence in Performance for Faculty, was a nominee for the West Virginia Merit Foundation Faculty of the Year, and a nominee for CASE Professor of the Year nationally.

Dr. Joseph Walsh, Assistant Professor of Mathematics, has been named The Matthew Quay Ammon Professor of Mathematics. Walsh, who joined Bethany in 2012, is a frequent participant and contributor at national and regional mathematics conferences, and has received prestigious awards and recognitions in mathematics and physics.

Dr. David R. Black is The Sarah B. Cochran Visiting Executive. Black retired at the end of the 2012-13 academic year as President of Eastern University and Palmer Theological Seminary in Pennsylvania. He previously served as President of Lakeland College in Wisconsin.

Travis Straub is The R. Richard Renner Visiting Scholar in English. Straub is a published author, and he served as fiction reader for the University of Pittsburgh's literary magazine *Hot Metal Bridge*. He also served as co-host of the Graduate Reading Series there.

"Bethany College is proud to have an outstanding faculty," Dr. Miller said. "This ceremony honors and recognizes significant, distinctive contributors to their fields. We are proud of their many accomplishments and appreciative of the philanthropic support of foundations, alumni and special friends who have made these special distinctions possible." The College has 13 endowed positions, he noted.

## Bethany College Awarded 2014 Military Friendly School Designation

BETHANY COLLEGE has been named to the coveted Military Friendly Schools list by Victory Media, Inc., the premier media entity for military personnel transitioning into civilian life.

The 2014 Military Friendly Schools list honors the top 20 percent of colleges, universities and trade schools in the country that are doing the most to embrace America's military service members, veterans, and spouses as students and ensure their success on campus.

## Taylor Receives Award at Fall Convocation

SOPHOMORE ANNE TAYLOR received the Richard B. Kenney Freshman Leadership Award for the 2012-13 school year during Fall Convocation held in Commencement Hall Thursday, Sept. 12, 2013.



Taylor, of Lancaster, N.Y., who is pursuing a degree in Integrated Marketing in the Communications and Media Arts Department, has a high GPA and is currently on the Dean's List. She is the Sophomore Class President, a Kalon Scholar and a Resident Assistant. Taylor also works as an Integrated Marketing Assistant and the Program Director at WVBC, the campus radio station, as well as an Assistant in the Office of the President.

Taylor's work in the Communications and Media Arts Department during her freshman year included maintaining *The Tower*, Bethany's online campus newspaper. She was in charge of weekly updates to the Bethany Broadcasting Network television station, as well as signing in on the air for the College's radio station, WVBC. Taylor has also been involved in many service projects.

The Kenney award is granted to a first-year student who has demonstrated outstanding leadership and character at Bethany College, who has been actively involved and who has contributed service and devotion to the College community.

## Bethany College Announces Grimes Lecture Series

THE BETHANY COLLEGE Alumni Council Board of Directors has established the Larry E. Grimes Lecture Series, honoring the inspirational professor who taught Bethany students for 39 years.

A 1964 graduate of Bethany, Dr. Grimes is currently the Director of Church Relations, Dean of Buffalo Seminary and Professor of English Emeritus.

This new campus-wide, interdisciplinary speaker series will engage Bethany students and the community at a personal level, by featuring leaders, writers and thinkers, many of whom will be published authors who challenge the audience to consider new perspectives about their education and the world.

Designed to coincide with Bethany College's 175th anniversary, the Grimes Lecture Series kicks off in 2014 with Dr. Grimes presenting his forthcoming book "*Hemingway, Cuba, and the Cuban Works*." The series will then continue with a new interesting and compelling speaker each year.

Grimes is an internationally known Hemingway scholar and a published poet. An ordained minister in the Christian Churches (Disciples of Christ), Dr. Grimes served as pastor of Community Christian Church for 15 years. He is the Moderator of the Christian Church (DOC) in West Virginia and serves on its Commission on the Ministry. As Dean of Buffalo Seminary, he coordinates year-round continuing education programs for clergy and laity. He also serves on the West Virginia Humanities Council.

For the past 43 years, Dr. Grimes has lived in the same home in Bethany with his wife, Carol Duecker Grimes, a 1966 Bethany graduate.

To assist with the fundraising effort to fully endow the Larry E. Grimes Lecture Series, please consider contributing by visiting [www.bethanywv.edu/give](http://www.bethanywv.edu/give). Please be sure to indicate that your gift is for the Grimes Fund. Additional questions can be addressed to the Office of Alumni & Parent Relations at 304-829-7299.



## Owens '93 Addresses Kalon Scholarship Candidates

TODD OWENS, a nonprofit consulting expert and 1993 Bethany graduate, delivered the keynote address for the 30th Annual Kalon Scholarship Luncheon, held on Feb. 15.

Owens, the cofounder and principal of Nonprofit Talent, has 14 years of nonprofit experience, in both consulting and executive search services. His company has taken on many impressive clients, including working with Talent-City.com to help The Pittsburgh Foundation and the city's mayor fill senior leadership roles.

The luncheon recognizes incoming students with leadership potential and serves as part of the Kalon Leadership Scholarship Competition.

Prior to the creation of his business, Owens managed Vantagen's nonprofit consulting services team in Pittsburgh whose main focuses were executive search, succession planning and interim executive leadership. Owens has previously worked with Kate Dewey at Dewey & Kaye and served clients as a project manager, facilitator, and organizational development consultant.

Owens was recently named one of the "People to know around Pittsburgh in the New Year" by the Pittsburgh Post-Gazette. Owens currently serves as Chairman of the Board of Directors of Attack Theatre and the Jefferson Awards for Public

Service. He is the prior Board Chair of Venture Outdoors and spends as much time outside as possible.

While at Bethany, Owens was a member of the Bethany Kalon Society and senior class president. He also was a recipient of the Francis O. Carfer Prize, an award presented to the senior who, in the judgment of the Honors Committee, has made the most outstanding contribution to the College. Owens graduated cum laude from Bethany, then received his Master of Science degree in Recreation, Park, and Tourism Administration from Western Illinois University.

## Bethany's Reilly Named Finalist for West Virginia Professor of the Year

DR. LISA REILLY, The Goulding-Woolery Professor in Chemistry and Associate Professor of Chemistry at Bethany College, has been announced as one of five finalists for The Faculty Merit Foundation of West Virginia 2013 Professor of the Year.

Dr. Reilly has served on the Bethany faculty since 2008 and is currently chair of the Department of Physical Science. She earned a Bachelor of Science degree in Chemistry from Mercyhurst College and a doctorate in Analytical Chemistry from Oklahoma State University.

In 2012 she received Bethany's prestigious President's Award for Excellence

in Performance. She serves on a wide variety of campus committees and serves as advisor to the Student Government Association, Alpha Xi Delta sorority and the Gamma Sigma Epsilon Chemistry Honors Society.

## Professor Harald Menz Receives Two Prestigious Faculty Awards

DR. HARALD MENZ, Professor of World Languages and Cultures and Director of International and Interdisciplinary Studies at Bethany College, has received two awards for academic excellence, according to Dr. Scott D. Miller, President of the College.

Dr. Menz was recognized at a campus ceremony with the International Association of University Presidents' 2013 International Education Faculty Achievement Award and the John R. Taylor Memorial Award in the Liberal Arts.



The IAUP Faculty Achievement Award recognizes faculty "who go the extra mile" to foster global understanding, Dr. Miller noted. The John R. Taylor Award, named in memory of a longtime professor at Bethany, is given annually to a faculty member who excels in teaching and research across disciplines in the liberal arts tradition.

Dr. Menz began teaching at Bethany in 1994. He has taught German, literature, civilization, elementary Spanish and first-year seminar courses throughout his time at Bethany.

Highly involved in teaching and mentoring students both in and outside the classroom, Dr. Menz has guided multiple study-abroad groups to various countries,

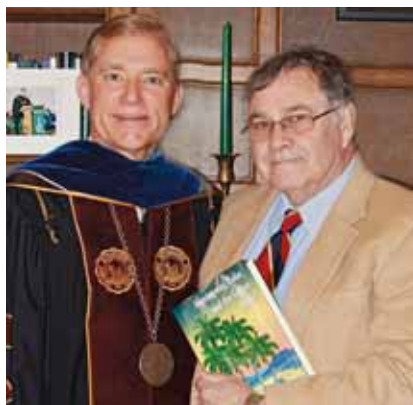
including Germany, Austria, Switzerland, Italy, Namibia and Chile. He is also an advisor to the German Club, Frisbee Club and Phi Kappa Tau.

## Bethany Professor Emeritus Releases Book on Hemingway

DR. LARRY GRIMES '64, Professor of English Emeritus and Director of Church Relations at Bethany College, has used his knowledge from years of studying Ernest Hemingway in the new release "Hemingway, Cuba and the Cuban Works." The volume is edited by Grimes and Bickford Sylvester, emeritus professor at the University of British Columbia.

The book, which was released by Kent State University Press, examines the profound impact of Cuba on Ernest Hemingway's life and work. Hemingway

lived in Cuba longer than anywhere else in the world, yet this is the first book dedicated to studying his life and writing there.



"As a writer, Hemingway took 'place' very seriously, so the influence of Cuba on his life and works seems most important,"

Grimes said, adding that Hemingway lived there for twenty years.

"Because Hemingway lived most of his adult life in Cuba and did not return to live in the United States, I think both his life and his writing changed," Grimes said. "He became a truly international writer and not just an American writer."

"Hemingway, Cuba, and the Cuban Works" presents contributions by scholars and journalists from the United States, Russia, Japan, and Cuba, who look at the Cuban culture and how it affected Hemingway's work.

Grimes is also the author of "The Religious Design of Hemingway's Early Fiction." His essays and reviews have appeared in several anthologies and journals, including The Hemingway Review, Modern Fiction Studies, and Studies in Short Fiction.

## Students, Faculty Receive NASA Research Funding



SIX BETHANY COLLEGE students and three faculty members have received funding through the NASA West Virginia Space Grant Consortium, according to Bethany Professor of Biology Dr. John T Burns. Burns serves as the College's NASA WV Space Grant Representative.

Dr. Jennifer Franko, Assistant Professor of Biology; Dr. Carolyn Kitchens, Assistant Professor of Chemistry; and Dr. Scott Brothers, Assistant Professor of Chemistry, have received NASA Faculty Research Enhancement Awards for collaborative research with Bethany College students.

Students receiving scholarships include chemistry major Alexander DelGiorno of Wadsworth, Ohio; biology major Amber Lancaster of Weirton, W.Va.; chemistry and mathematics major Jacob Fischer of Huntington, W.Va.; chemistry major Samuel Duvall of Shadyside, Ohio; chemistry major Morgan Jacobs, of Hurricane, W.Va.; and chemistry major Kristen Sroka of Elizabeth, Pa.

The WVSGC funding was matched 1:1 by Bethany College to provide a total of \$12,000 for the faculty research and \$22,000 for the student scholarships.

# Bethany Touch

**DR. JENNIFER FRANKO** plans to introduce students to state-of-the-art biomedical research technology in her labs. She has acquired research equipment through several external grants and collaborations.



THERE'S NOTHING easy about what Dr. Jennifer Franko teaches. An Assistant Professor of Biology at Bethany since 2011, she fosters the College's legacy of rigorous science courses that, over the years, have prepared Bethanians for highly successful careers as physicians, educators, researchers, inventors and other professionals in a myriad of fields.

Jennifer's curriculum is a no-nonsense menu of human biology, cell biology, microbiology, invertebrate cell biology, immunology and "laboratory safety and use of hazardous materials"—classes not for the faint of heart or the casual learner. Her discipline is rapidly changing, increasingly high-tech and extremely competitive. She knows what's out there, and that her students need to be prepared.

"Learning how to think and solve problems is what college is about," Jennifer states. "You have to learn discipline. The job market is strange. You have to wear multiple hats in our field, and when you start encouraging students to go into research, it's a tough proposition. Government budgets are being cut, so the traditional academic scientist has to take on new roles. You need to be able to tie into other specialties. Networking is a major plus. And being mobile, willing to move."

She clearly enjoys what she does ("This is fun. We're lucky in science."), and speaks of her commitment to student success: "We're hoping for strong candidates who want to learn. Exposing them to the possibilities is a huge deal. Most of the time when students enter college as a biology major, they have no idea what being a biology major actually means or what job options are available besides being a doctor." She also believes it is important to "treat students as future colleagues, respect them, and encourage them to give back."

"I want them to find jobs that will make them happy," she says.

Her own career pathway took an influential detour. An animal lover and biology major at Geneva College, she originally wanted to be a veterinarian. After working at a local veterinary clinic, however, she realized that the career wasn't what she thought it would be.

"All I saw was spaying and neutering, and I knew I couldn't do this for the rest of my life," she says. It wasn't until she took classes like microbiology, virology and immunology and participated in a

University of Pittsburgh research project that she was inspired to pursue a research career. "I realized I was more interested in the mechanism of how diseases work rather than simply treating them," she says. "It wasn't until I took those classes that I understood how exciting it was to learn how it all works," she points out.

Jennifer earned her doctorate in pathology from Case Western Reserve University, focusing on the "Cellular and Molecular Basis of Disease and Immunology." A post-doctoral fellowship followed at the Centers for Disease Control and Prevention and the National Institute for Occupational Safety and Health in Morgantown, W.Va. She has an extensive conference, research and publication history, and has been active at Bethany as advisor of the Beta Beta Beta Honors Society and 2013 Senior Class Council, among other assignments. She teaches a First-Year Seminar on issues of bioethics, and relaxes in the wilderness by mountain biking, hunting and whitewater kayaking on the Lower Big Sandy and Upper Youghiogheny rivers.

"We encourage our students to be disciplined and work hard, but taking time to relax and enjoy life is also important," she says, adding that learning to balance the two is the key. "Boating got me through grad school," she says, smiling. "You meet some fascinating people on the water."

In 2013, Jennifer was voted by the student body as one of the top five professors at Bethany. Her teaching method derives from the traditional "chalk-talk" interaction, rather than relying totally on PowerPoint ("PowerPoint is too passive; if I make them take notes, they pay attention more."). She searches for a more active-learning approach, such as lab experiences. "It's difficult trying to balance how much they should learn and what you want to expose them to," she comments. "I always want to expose them to more. To get them to want to learn more, I think it's important to be interested in what you do. If students see you're excited, it's easier to get them excited. Also, if students see they can get from here to there, see what their end goal is, it's easier to get them to buy into it."

She recognizes that her field requires an unusual degree of mental fitness by her students, but, she says, "I don't get angry if they're not prepared. I'll do anything for you to get you where you want to be if you

are willing to work hard. I want to take students to the next level." Personal technology, however, is a concern for Jennifer, as it is for many faculty today. "There is so much information out there that students don't learn it," she says. "They think they can just look it up. To some extent that's true, but you have to understand the field to make sense of the information." She says a student still has to learn the "base information" to learn other concepts, including those that drive technology. "Research still demands that. You have to understand what lies behind the technology."

"I haven't learned how to make the technology active (in the classroom)," Jennifer concludes, though one comes away with the impression that being the scientist that she is, she will figure it out. Although she continues to give "chalk-talks" in class, she plans to begin to introduce students to state-of-the-art biomedical research technology in her labs. Jennifer has acquired research equipment, through several external grants and collaborations with West Virginia University and the West Virginia IDEa Network of Biomedical Research Excellence program, which will allow students to perform cell culture, as well as gene and protein expression analysis.

She also hopes to begin to incorporate bioinformatics into her labs. This semester, her cell biology class will utilize their newfound knowledge of such techniques to analyze the effect of triclosan, an antimicrobial commonly found in consumer products, such as hand sanitizer and toothpastes, on T-cell function. Jennifer recently co-authored a paper published in "Toxicological Sciences," which demonstrated that dermal exposure to triclosan augments asthma-like responses in a mouse model. These studies will investigate the mechanism by which triclosan induces these effects and will give students hands-on research experience at Bethany while learning about the basic mechanisms that regulate cell function.

Some might conclude that it's an ambitious agenda for a small-college biology professor, but that same setting is rewarding in other important ways to Jennifer. She prefers personal communication with her students—the Bethany touch. "I don't have a smart phone," Jennifer says. "Come and talk to me instead. It's OK not to have a smart phone."

# Molding Lives Through Clay

Professor **AARON ANSLOW** says the College shaped his art of living, and is still molding it in the way he teaches his students to create pottery. “Bethany does all it can to take care of students. We do our best to make sure everyone succeeds.”

AARON ANSLOW '06 RISES to greet a visitor in his spartan office in the Grace Phillips Johnson Visual Arts Center. His space contrasts with the brightly lighted, high-tech campus TV studios just down the hall—here, low light, few instruments, a single desk, ceramic works on shelves. It's a place meant for an artist, not an engineer, though it suggests the military, squared-away look of the Army in which Aaron once served. It's a welcoming office because its occupant is warm and genuine. Aaron likes to talk about Bethany College, his alma mater and now employer. Bethany shaped the art of living for Aaron, is still molding it in the way he teaches his students to create pottery. He leans forward and smiles as he remembers how “Bethany helped me define myself.”

“I came here from Barnesville, Ohio, to play football,” Aaron says, reared by a single mother and the first in his family to attend college. “Dr. Larry Grimes was my freshman advisor. I made strong friends here and bonded with my professors. I love that Bethany is its own place, a community.” He had joined the Army Reserves, yet “wanted to be a part of this place.” Initially Aaron majored in history. Then he took the class 3-Dimensional Design. He touched clay for the first time, and knew he had to change his major. A new world opened, including study abroad at Regents College in London. “I had to broaden my horizons,” he says.

When Aaron was a senior, he was pulled away from campus for duty in Iraq where he hauled fuel for the Army and

later provided security for the supply convoys. It was about as far from working with clay as one could imagine, and when he returned to Bethany to finish his studies, “everything seemed simple and doable. After the service, it was all small stuff. Nothing was life-threatening, and I was disciplined.”

The College helped him “navigate the fine print” of the GI Bill and he completed his undergraduate degree in 2006, eventually earning his Master of Fine Arts from West Virginia University. “I’m indebted to Bethany,” he states. “Bethany worked its magic on me. Students need someone to help them figure out what they can do.”

**“Bethany worked its magic on me. Students need someone to help them figure out what they can do.”**

In 2011, Aaron became an adjunct instructor in ceramics at his alma mater, then a visiting assistant professor, which led to a full-time appointment. Now, in his third year on the College faculty, he has a visible and caring presence as an advisor and mentor. “(Coordinator of the campus writing center) Heather Taylor works with words; I work with clay,” he says. “You have to get to know your students, hone their skills. They learn to be patient working with clay, have to let the clay dry and then wait for the work to come out of the kiln. We hope they retain what they learn, if only an appreciation for art. “

His military service still has a seat at his desk. “I try to use my Army training to be consistent and reliable for my students,” he says. “We have to maintain that continuity for them. When you’re firing a rifle, your life is on the line. Not so working with clay, but I want to help them build confidence and a toolbox of skills.”

He smiles. “They complain about comps. I took comps. Oral comps are your first job interview. You have to justify what you know. I’m a product of this place. I feel like an older brother sometimes.” Ultimately, he points out, success is the students’ responsibility. “Bethany does all it can to take care of them. We do our best to make sure everyone succeeds. I tell my students, after they get the degree, it’s up to them. It’s a caring place, but they have to be accountable. I try to hold to the standards. Teaching accountability through clay—it’s tough.”

He smiles again. “I have more and more respect for my teachers being here now on the faculty.”

Recently becoming a father with his wife Kristin (Plumsky), a 2003 Bethany graduate, Aaron balances a busy schedule of exhibitions, presentations, teaching, and advising. He has plans to enhance the ceramics studio, and to stay at the College “as long as they’ll keep me.”

“Being a student here changed my life,” he says. “It’s wonderful touching someone else’s life. There is a real sense of community at Bethany. When you leave, you look for it everywhere.”



Professor AARON ANSLOW  
(right) demonstrates the  
potter's wheel during class.

# IT'S ALL ABOUT OUR STUDENTS

**M.E. YANCOSEK GAMBLE**, Chair of Bethany's Department of Business and Communications and Media Arts, cites the career advantages of majoring in a program that offers a myriad of opportunities with state-of-the-art technology and a high degree of personal mentoring, placement in internships and career counseling.



M.E. YANCOSEK GAMBLE, Chair of Bethany's Department of Business and Communications and Media Arts, works with students Whitney Lewicki, Michael Ainsworth and Anne Taylor in the WVBC broadcasting studios.

IT'S CHRISTMAS EVE in Siesta Key, Fla., and over breakfast at a local eatery, M.E. Yancosek Gamble, Chair of Bethany's Department of Business and Communications and Media Arts, is promoting the advantages of majoring in her program. A Bethany College freshman vacationing

in Florida with his family has decided to join the fastest-growing department at the College. Later, his mother emails M.E. with appreciation for her personal attention to her son's career plans.

In four years, the Communications and Media Arts Program has grown from 64

majors to more than 100 today. But M.E. (short for Mary Elizabeth) takes none of the credit. Instead, she cites the career advantages of majoring in a program that offers a myriad of opportunities with state-of-the-art technology and a high degree of personal mentoring, placement

in internships and career counseling.

After a complete curricular overhaul, the program's students can now choose from various career tracks, ranging from integrated marketing to digital media and now sports communication.

Communications theory, ethics, media writing and other topics round out the program, designed for today's aggressive, rapidly evolving world of instant, 24-hour news and personal technology while staying consistent with the College's mission of liberal arts education and critical thinking.

M.E.'s graduates work for top PR agencies, media companies and dozens of other influential firms and organizations throughout the country. In the last two years, the program had a record number of students placed in internships. Annual Communications Week programs bring accomplished Bethany alumni like Faith Daniels '79, Marie DeParis '83 and other communications professionals to campus to mentor students. The John Keresty Lectures in Journalism, named for the late corporate CEO and writer John G. Keresty '63, explore the latest trends and career options of a field that is no longer just your morning newspaper.

"One of the biggest challenges we have is staying abreast of, and we hope ahead of, fast-moving changes in communications," M.E. points out. "The concepts, applications, technology, formats and marketing of print, broadcast and digital media present incredible opportunities for students. But for us in the program, it's a race to keep up and make our instruction relevant. That is why critical thinking is essential. Software and social media may change, but good thinking does not."

Among her strategies has been to offer experiential training through live webstreaming of athletics and campus events by the student-operated Bethany Broadcast Network (BBN). Securing grants to purchase new digital equipment, including a mobile unit, and to re-establish a TV studio in the Grace Phillips Johnson Visual Arts Center, M.E. directs a busy webstreaming schedule of home athletic games, convocations, ceremonies, and the monthly, student-produced "For the Record" broadcast by President Scott D. Miller — all available through links on the Bethany College website. WVBC radio has transitioned to an all-digital format, reflecting the current industry shift away from "terrestrial" tower broadcasting. Grants helped to refurbish that studio, too.

BBN students have traveled to The Greenbrier to cover the state's annual Cast Iron Cook-Off culinary competition, Nemacolin Woodlands Resort to produce a weekend marketing promo for "The Breast Weekend Ever" on breast cancer awareness, and Jamboree in the Hills to serve as interns for a week of live music broadcasts.

The experience has paid off for numerous students. Jimmy Reeves '13 landed a position with NBC Sports in the New York City market, where he says he was "more than prepared" thanks to his Bethany education, training and experience. Senior Noelle Wright interned at International Relief & Development (IRD) in Arlington, Va., where she applied her departmental experience, including her experience as editor of "The Tower" campus online newspaper, to developing IRD's worldwide social media strategy and promoting the agency's humanitarian programs.

A key development for the program was its relocation from Morlan Hall to more high-visibility quarters at Bethany House, joining the WVBC studios and enabling M.E. to establish a "Communications Wall of Fame" that greets visitors and celebrates the achievements of notable Bethanians. Photos of current students receiving awards, gaining internship experience, and covering campus events line the walls, along with plaques honoring the department's heritage through such well-known names as former beloved professor James "Jim" Carty Jr. and the Ogden and Nutting publishing family.

The program takes a holistic approach to student success. Student engagement in its programs leads to a high retention and graduation rate—and the department has the second-highest rate at Bethany of students graduating in fewer than four years.

Recruitment of new majors is a department priority; students regularly work Green & White campus recruiting days, promoting the opportunities in front of the microphone or behind it. "If we can get the prospective students to campus and one of our fellows puts them on the air over WVBC or BBN, the prospects generally send their enrollment deposit checks the next day," M.E. points out.

At the center of it all with M.E., who previously taught at Bethany in the late 1980s, are fellow full-time faculty members Dr. Patrick J. Sutherland and Dr. Jason K. Smith, and chief broadcast

engineer and manager of BBN Joseph F. Dumas, whose television career spans live to tape, black and white to color, analog to digital.

"Our team is incredibly dedicated, professional and devoted to our students," M.E. says. "They genuinely care about their personal and professional opportunities, and none of our program's achievements would have happened without these guys." She also credits a national network of Bethany alumni like George Manahan '83, president of The Manahan Group, Charleston, W.Va.; Evelyn del Cerro '83 of ABC Television; Dave Sims '75, voice of the Seattle Mariners; and Grant McLaughlin '91, vice president of Booz Allen Hamilton, for their expert mentoring of the program's majors. "Our communications alumni have been extremely generous with their time and support, and I cannot thank them enough for making so much happen for our students," M.E. says.

Prior to joining the Bethany faculty in 2009, M.E. served as then West Virginia Governor Joe Manchin's state director of small business development in Charleston. It was a challenging assignment in a career that has included retail marketing, campaign communications, and business training and consulting. But, she points out, when she was recruited to teach at Bethany, "I brought everything I had learned in government that now benefits our program and our students."

She had launched her teaching career, after doctoral study at Bowling Green State University in Ohio, at a time when the communications field was still largely theory-driven, and print remained the dominant medium. Today the digital revolution and integrated marketing of communications drive what students have to learn.

"I take small chunks of industry information and trends, digest them, try to apply them to our program needs," she says. "It's about our students, what they need now and are going to need."

"Our program is also thinking of adding an entrepreneurial media class since we know students will be working for themselves much of the time in the future. It can be daunting to try to keep up with it all, but we have no choice. Our field is accelerating, changing how we view almost the entire world," M.E. says.

"Our graduating seniors, very soon, will be mentoring all of us."

# ADVENTURES IN LEARNING

DR. JOSEPH LOVANO, Professor of World Languages and Cultures, works among artifacts of the world in his Morlan Hall office. It's a neat, ordered place, filled with books, posters, candles, sombreros and a rotating globe of the Earth. Many of the items are souvenirs from his and his students' travels ("They bring me gifts," he says, smiling)—an office reflective of his position as professor of Spanish and Italian at Bethany.

His paper-free desk is a clue to his teaching philosophy.

"I'd like to throw this away," Joe says, holding a red grading pencil. He is, after all, a professor of languages. He prefers to hear his students' achievements. "I wonder if I should do only oral exams," he adds. "That's when we can have a real discussion. There's no one there but them and me, but I think they walk out having learned something."

After a career spanning nearly 30 years, 17 of them at Bethany, Joe has seen how learning changes, and how teaching needs to, as well. "I think about it all the time," he says. "There's a definite generational shift with the 'millennial' students. They have so much information at their fingertips, but how do they decide what's valid?"

Accordingly, he prepares his students so that they can communicate both in oral and written form. But, he points out, "the problem with written exams is that many excel and others don't. So I have two finals—a final oral and a final written. I find that the oral version is more valuable. The languages and cultures I teach fit with my idea of the personal touch. They go hand-in-hand with my teaching style."

He adds, "You can't do without the written, but the students can shine in the oral. They can work with the material, analyze and comment. There's plenty I could say in an oral exam, but I want to hear what they have to say. I think it's valuable for them to see that they've learned something." He believes that other methods of determining students' progress "may not give them the same confidence."

Joe's more personalized teaching style

flourishes at Bethany College. "Bethany has been a good place for me," he states. "I see our location as a positive. We draw from different parts of the country, from different community experiences. It would be a tough place if you cared only about doing research all the time. But here you can really make a difference through the personal touch."

As he travels the world with his students, Bethany's long history and stellar reputation of liberal arts instruction — existing as a chartered college that is older than West Virginia itself — are impressive to those he meets. "The history of the College, our traditions, all tie in to Alexander Campbell's mission. He set a tone that continues," Joe comments.

Although he notes that at this small college, he and many faculty members have a heavy teaching schedule — "As I tell my colleagues and students, 'We do cartwheels for you at Bethany College.'" — he doesn't seem to mind. He says Bethany enriches him every day, and he values the relationships that are possible with students and alumni, like Oreon E. Scott Award winner Jamie Spataro '00 who returned to the Bethany campus as a guest lecturer. "To have one of my stars — Bethany's stars — to come back as a guest lecturer, that's an inspiration for me and for all of us. Those kinds of moments really make a difference."

Bethany is a long way from where Joe began his career. He had decided by age 15 to work in languages. But his parents, who were "old school," wanted him to become a doctor, lawyer or engineer. Joe began study in accounting, took a three-year hiatus to live and work in Europe, and later worked as an apprentice electrician and a baker. "I think if we could compile all our faculty stories about the jobs we have had," he laughs, "it would be a beautiful mosaic." Work as a court interpreter in Los Angeles was "similar" to his real dream: to serve as an interpreter at the United Nations.

But teaching beckoned. With degrees in romance linguistics and literature from the University of California, Los Angeles, Joe held various teaching posts including as an

instructor at Mount San Antonio College in Walnut, Calif.; an assistant professor of Spanish and Italian at Gonzaga University, Spokane, Wash.; and an associate professor at Whitworth College, Spokane, before joining the Bethany faculty in 1997.

"Teaching at Bethany over the years, I bring to the classroom all those experiences," he points out. "When our students start their careers, I can relate to them." He sets a strong example by continuing his own education. He is fluent in French and Portuguese, and self-taught in Hindi and Arabic.


It was during his seven years on the Jesuit Gonzaga campus that Joe learned the importance of integrating compassion and social justice into his teaching, a way of practicing his profession that has only been deepened at Bethany. "It's very rewarding for me to be at a place where people care," he says. "I've seen time and time again that people ask about you. They care. We need each other. We can't afford to be arrogant here. We're part of a team effort to move things forward for this college, for our society."

For Joe, that society is truly international, requiring the teaching of different cultures, urging students to be multicultural in their societal outlook—to step outside their comfort zones and treat others with respect. He therefore values the labor-intensive but immensely rewarding travel-abroad opportunities that Bethany presents. Joe has led student trips to Puerto Rico, Spain, Mexico, and other nations. "It's learning that students can take hold of outside the classroom. It changes their lives. Beyond that (travel) experience, it will continue to be an adventure," he says.

His commitment led to his being recognized in 2012 by the International Association of University Presidents with its International Education Faculty Achievement Award. The honor was granted "in recognition of his extraordinary commitment to fostering international understanding and preparation of students to be world citizens."

It is a measure of Joe's passion for learning, the strength of his teaching, and his devotion to his students that he has brought so much of the world to Bethany College. His office window overlooks the campus quad but is truly, by his presence, a window on that wider world.

"I did the right thing, becoming a teacher," he says. "I still love it. I've never been bored teaching, and I hope it never happens."



DR. JOSEPH LOVANO, Professor of World Languages and Cultures, values the labor-intensive but immensely rewarding travel-abroad opportunities that Bethany presents. "It's learning that students can take hold of outside the classroom. It changes their lives. Beyond that (travel) experience, it will continue to be an adventure."



Carlíe Fisher meets with  
Professor of Social Work  
Kathy Shelek-Furbee in the  
T.W. Phillips Memorial Library.

# The Personal Touch

Senior **CARLIE FISHER**, a social work major, says Bethany's tradition of instilling personal leadership in students has helped her realize what she can offer to others.

ONE OF THE hottest trends in higher education today is online learning—classroom instruction via a computer. But for senior Carlie Fisher, the personal touch is vitally important to her. In fact, the mentors she has met at Bethany College have made all the difference in her education.

Carlie, a social work major from Follansbee, W.Va., says Bethany's tradition of instilling personal leadership in students has helped her realize what she can offer to others, to "develop into somebody who's ready to apply education to something greater."

"Bethany makes you realize who you are and what you can contribute. So many alumni reflect positively on their experiences, and have gone far because of their time here," she states. She suggests that what she has learned from influential Bethany mentors cannot be duplicated by a class taken online. Learning from others has solidified her commitment to service.

Her most important early mentors were her parents. "I was lucky to have their time and focus. They were always there for me. I was an only child, but I was taught that I had to work for things," she says.

Growing up near Bethany College in the Ohio Valley, Carlie spent a lot of time at the College, attending softball clinics and hearing positive reviews from her cousins who are graduates. Although Carlie wasn't sure initially what she wanted out of college, she knew she wanted to help others. Working in mental health, performing clinical therapy, and perhaps moving on to a career in law appealed to her. She started auditioning for campus theater productions, reasoning that acting ability would serve her well in a courtroom. Her performances were eclectic, ranging from "A Chorus Line" to Shakespeare's violent tragedy "Titus Andronicus."

Another important step was being tapped to work in President Scott D. Miller's office. The assignment proved to be time well spent for Carlie's career development; "it introduced me to a lot of different people and experiences." She credits Deidra Hall-Nuzum, formerly the president's staff assistant, as an important leader who mentored Carlie in writing correspondence, managing social media, and developing online features as part of the communications strategy of the presi-

dent's office. Her media experience for the president as well as her academic department led to her being recognized at a banquet with "The Most Likely to Create a Flyer for That" award.

Other experiences have also shaped her development, including working with Bethany's horse rescue and equine therapy programs, in conjunction with Oglebay Resort and Conference Center in Wheeling, W.Va., as well as assignments



with Elmhurst Assisted Living and Bannam Place, a halfway house. Carlie has a minor in criminal justice, and experience with the U.S. Marshalls office in Wheeling revealed to her how close and crucial social work and the criminal-justice system are to each other. She relies on other

Bethanians for career advice and guidance. "I look up to Joyce '78 and Marc Chernenko '78 and their background in law and family court," she says. "They've

**"I have had several underclassmen come to me for advice, and I have mentored them without intending to. I never thought I had the answers for them, but I do. I guess you don't realize how much you're learning until it's time to apply it. Now I'm realizing how much I've picked up over four years."**

been amazing, working with me, giving me advice." She also credits Frank Haas '79, a lay pastor at her church, as an important influence.

Then there are the "extraordinary professors" at Bethany, like Professor of Social Work Kathy Shelek-Furbee and Associate Professor of Social Work Melanee Sinclair. "They have a lot of input and insight," Carlie says. "They put all of their effort into their teaching, and are always available. I probably wouldn't do as well without them."

Zeta sisters like Joyce Chernenko and Caroline Hoag '11, along with advisor Ashley Kanotz '06, Director of Alumni and Parent Relations at Bethany, have fostered her development as a leader. "It has been a pleasure working with Carlie and the other girls in the house," Ashley says. "It has brought meaning and fulfillment as I watch her and others grow in their leadership."

"Seeing the types of people who have most influenced me in my education are

all from Bethany College," Carlie concludes.

The components of being a social work major—research and writing, experiential learning, studying how agencies facilitate work—have offered "huge value" for Carlie. She says it's great to step outside the classroom for an added perspective. And now she is already giving back.

"I have had several underclassmen come to me for advice, and I have mentored them without intending to," she says. "I never thought I had the answers for them, but I do. I guess you don't realize how much you're learning until it's time to apply it. Now I'm realizing how much I've picked up over four years." In recognition of her achievements, Carlie received the Lynn Frantz Adkins Award in 2013 for excellence in social work. And she was the only student in her class inducted into Phi Alpha Honor Society for social work students.

Armed with the knowledge and skills to address some of society's most contemporary and urgent concerns, Carlie nevertheless sees value in honoring tradition.

"The selling point of Bethany is its history," she states. "I've learned a lot about its past. We've kept it traditional. Bethany's appeal for me was that we preserved the way things were. We're still moving forward, but the College's nostalgia and traditions drew me in. No one can reproduce an Old Main."

In addition to the charm and beauty of the campus, Carlie values Bethany's commitment to personal instruction. "I know people who've taken online courses, and I don't know how you learn to be successful without seeing what others are learning and what works for them. Basic human interaction can't be taught with a computer or PowerPoint. We have morality by doing some things the old-fashioned way. In terms of being part of something greater than one person, you couldn't produce that any other way.

"Bethany has stayed in line with my values and reinforced who I'm supposed to be."

# COLLABORATIVE RELATIONSHIPS

Senior **CAMERON COOPER**, a financial economics major, credits the College for offering collaborative relationships with professors and faculty for recommendations and advice.

THE FIRST in his family to attend Bethany, Cam was recruited to play football, and, like many students, fell in love with the campus as soon as he saw it. “There’s so much beauty here,” he says, “that you can’t tell until you witness it firsthand.” He had played football for Hurricane High School in Putnam County, W.Va., near Charleston. He and his five brothers “are all active in sports. But there was only one broken bone in the whole family,” he laughs.

For the Bison, Cam played wide receiver and became team captain as well as a tutor for his academic department, Economics and Business. Like many students at Bethany, he has flourished as a leader.

“I’ve always been in positions of leadership, but I see myself growing as a leader every single day,” Cam says. He likes to help and motivate others, which has aided his growth as a leader off and on the playing field. The senior financial economics major plans to attend graduate school at Vanderbilt for his Master of Accountancy, then work for a public accounting firm. It’s a career path in high demand, he points out, and he’d like to work his way up the ladder, eventually becoming a manager at a big firm. He’d love to stay in his native West Virginia, but hints that he will go where the opportunities are.

Cam’s earliest mentors were his parents, and they remain influential. His father is general manager of WCHS-TV in Charleston; his mother, a top sales executive. Both “laid the foundation” for

Cam and his brothers to be successful.

His story takes a less typical path as he describes his experience as chief executive officer of the McCann Student Investment Fund—the real financial investment portfolio managed by Bethany students. Cam sees it as a “tremendous opportunity” for an undergraduate to manage a real portfolio of more than a million dollars, established by a gift from Dr. Robert McCann ’80 and his wife Cindy. “For an undergrad, you don’t pick up these skills elsewhere. We’re lucky to have this great opportunity. It’s a step above other students entering the career world,” Cam says.

**As chief executive officer of the McCann Student Investment Fund—the real financial investment portfolio established by a gift from Dr. Robert McCann ’80 and his wife Cindy and managed by Bethany students—Cam sees it as a “tremendous opportunity” for an undergraduate to manage a real portfolio of more than a million dollars.**

The fund’s advisor is Dr. Anju Ramjee, the John F. and Evelyn Casey Steen Professor in Economics and Professor of Finance at Bethany. “She’s wonderful to work with, always pushing (students) to try harder, and has tremendous insight in the financial world,” Cam states.

“She’s an expert in that field, keeps the fund moving, and is as passionate about it as we are.” He smiles. “We had a 4 and a half percent gain this semester. We’re still making money.”

Cam says that the McCann Student Investment Fund is an “eyebrow raiser” with potential employers. He credits the College for offering collaborative relationships with professors like Ramjee. “Being able to approach President Miller for recommendations—a larger school does not always give those opportunities,” he points out.

He looks forward to having a family, building his career and giving back to his alma mater. “With success comes giving back,” he says. “Every alum has an obligation to do that. We need to keep good students coming here, and continue to make improvements to attract them.”

Having coached Little League baseball, he is also passionate about working with kids. It’s yet another illustration of the importance of mentoring in his life—both receiving it and providing it.

“I always looked up to the high school football players,” he says. “You realize how much others look up to you, too.”





MARIE (far right) is pictured at Citi Field, the home of the New York Mets, following a check presentation to the Jersey City Junior RBI League from SNY's "Play Ball!" initiative, presented by Sports Authority.

# FROM A SMALL COLLEGE TO THE BIG TIME

"WHEN I WENT TO Bethany College, I thought I knew what I wanted to do," Marie DeParis '83 says. "But there were so many experiences there that opened up the world for me. I know the benefit of the smaller college. I wouldn't trade that

for anything. It was the right place for me."

"Bethany," she says, "has a bit of magic."

The Bethany magic has stayed with Marie throughout her career—all the way to vice president for marketing and business development for SNY, a regional

sports network and the official TV home of the New York Mets, Jets and University of Connecticut basketball. Marie handles the consumer marketing, including on-air promotion, advertising, affiliate marketing and sales promotion.

Her clients number some 8.6 million homes in New York, New Jersey, Connecticut, and Northeastern Pennsylvania, and nationally on DIRECTV and AT&T U-Verse. From her Manhattan office, she promotes 130 live New York Mets games each season, along

with related Mets “shoulder” programming and 250 hours of year-round, in-depth New York Jets content. Her company is New York’s leader in local sports coverage, airing nightly sports and entertainment programs. Marie has won three New York Emmy Awards and five ProMaxBDA North America Promotion & Marketing Awards for television commercial campaigns, promotional spots and digital projects.

And it all started at Bethany College, in the campus radio station, with Marie learning the broadcast business at first on the air, and then in management.

“I watched how the students managed the radio station,” she recalls. “Students did the work. The station was playing music I didn’t listen to at home, offering a totally different take on what a radio station could be.

“Then I became student manager of WVBC, the first female manager. You learned a lot of everything; we learned from each other. The station gave me a lot of exposure to visiting artists and politicians...President Gerald Ford, (Public Broadcasting’s) Judy Woodruff, visiting music groups. We did all of it.”

She worked on “The Tower” campus newspaper (“Many of us wanted to be journalists in the post-Watergate era; journalists could be rock stars.”), and then migrated to the student board of governors where she helped to promote campus programs and activities. She joined the French Club, and had the opportunity to travel abroad—“an amazing experience,” she says. She did things, went places that had never occurred to her. Early mentors included the radio station’s Jim Humes; Hal Shaver of the Communications Department; Pauline Nelson, her French professor (“She opened my eyes to the world.”); and John Taylor, a confirmed Anglophile who forgave Marie, she says, for choosing to travel to France. Then there was Larry Grimes whose J-Term class on the films of Alfred Hitchcock was an “incredible experience.”

“I had wonderful professors who mentored you in who you were as a person, how to do the right thing, the importance of taking responsibility,” she says. “I learned not to be afraid, to be myself.”

One of the value-added features for Marie was contact with other Bethanians—alumni who visited and offered support. They noticed the hard-working young woman who was eager to learn the broad-

casting business and take on more responsibility to broaden her experience. Her WVBC work led to a part-time job at a Weirton station and a January Term internship in New York City. A key contact was fellow Bethanian Rick Clancy ’76, an influential mentor.

“I was like, ‘Wow, I have to find a way to make this happen,’” Marie recalls. “There was a small stipend that came with the internship. I sublet a room at the Salvation Army. That took care of my stipend, maybe \$50 a week. At the same time, I was studying for comps. But it was such a great experience and once out of school, I had a job offer with Rick to be an account executive.

“Someone was looking out for me at Bethany,” she says. “Rick was the only person I knew in New York City, but he was there for me.”

Marie graduated from Bethany in 1983 with a degree in communications and French. Before joining SNY in 2007, she was senior vice president of strategic marketing and sales for the New York Daily News where she led all consumer and trade marketing as well as serving as the associate publisher of the organization’s



website. She has also held management positions at Fox Television (local FOX5 and My9 stations) and Radio City Music Hall Productions in New York.

**“There are different kinds of mentoring that people need in different times in their careers. Working in the real world is where you need to be. If you have the basic tools and learn how to find answers, learn research, you’re going to go a long way. Finding answers, doing research, you learn this in a liberal arts education.”**

“Now I work in this world where most of the people I work with have gone to big universities. You’re judged by where you’ve gone to school,” she points out. But as she addressed the Kalon Scholars luncheon on the Bethany campus several years ago, it was clear that Bethany had been the right choice for her.

“When I’m editing something, I always think about what I learned at Bethany,”

she says now. “I use my radio station experiences to write promotional copy. I use more of what I learned outside the classroom. At the campus radio station, I learned management, organization. Our management group met daily and had a list of objectives. That, I learned outside the classroom.”

Marie also stresses the importance of taking responsibility for one’s career success.

“Students need to get out and get experience and start working. You should have some focus, have an idea of what your skill set is, what you’re bringing to that first job,” she states. “Find the trade publications for the industry you want to go into. Read the articles. Find out what people are doing, how they’re moving from job to job. What are employers looking for? What will make you successful and can you match up? A lot of big companies have amazing job search sites.”

She says college graduates have to be able to market and present themselves, to stand out and be professional in person, on the telephone, through email. “And have good writing skills,” she insists. “I always look for that.”

Monitoring trends in communications and media fields, Marie encourages students to self-publish, write blogs and learn to write their own copy. She knows that in an integrated media world that exists more and more online, they will very likely someday work for themselves.

A beneficiary of mentoring in her own life, Marie has given back as a former mentor through the Women in Sports and Entertainment Within Mentor Program and the Parent Advisory Council of the Alliance for a Healthier Generation, a

nonprofit organization founded by the William J. Clinton Foundation and the American Heart Association. “I have mentored a woman in the NFL who was going through some life and career changes,” Marie points out. “There are

different kinds of mentoring that people need in different times in their careers.”

“Working in the real world is where you need to be,” she concludes. “If you have the basic tools and learn how to find answers, learn research, you’re going to go a long way. Finding answers, doing research, you learn this in a liberal arts education.

“I never had any other education.”

# Q&A LEARNING FROM LEGENDS

Like many Bethanians, **CRAIG WILLIAMS '96** was inspired as a student by campus mentors whose influence continues to shape his life and career. When he is not providing policy analysis for Amgen, Inc., a global biotechnology and human-therapeutics company, he generously reserves time for the Bethany College Alumni Council, serving as Advancement Committee Chair.

CRAIG WILLIAMS '96 never worries about keeping busy. As Director of State Policy for U.S. Government Affairs for Amgen, Inc., a global biotechnology and human-therapeutics company, Craig is on the front lines of the health-policy field. When he is not providing policy analysis for his employer, the Odenton, Md., resident generously reserves time for the Bethany College Alumni Council, serving as Advancement Committee Chair.

Like many Bethanians, Craig was

inspired as a student by campus mentors whose influence continues to shape his life and career. The double English and political science major later earned his master's and doctoral degrees in political science at the University of Oklahoma before serving as Deputy Chief of Staff in the

administration of former Maryland Governor Robert L. Ehrlich Jr.

*Bethany Today* Features Editor Mort Gamble asked Craig to share his Bethany story, one defined by the many people who inspired him then and do so now.

**Q. WHAT HAVE been some of the most important experiences of your time at Bethany as a student?**

My time at Bethany was terrific from the moment I stepped on campus and hasn't stopped being that way as an alumnus. I met friends for life, learned life lessons,

received a top-notch education, and found a professional and personal path forward.

Taking classes in the English Department and deciding to double major in political science was a great but tough choice. I was able to learn from a deep and broad exposure to the liberal arts while also preparing for graduate school and beyond. Joining the Greek system as a member of Phi Kappa Tau was another great decision. At that time, I think about 80% of freshmen men went Greek, and the chapters were thriving. I met many friends for life in Phi Tau, including brothers who are decades older and still remain part of a close group. My experience is always a reminder to me to support Bethany's rich tradition of Greek life and work to sustain its growth today. I also met my wife, Chris Colcombe '95, at Bethany, and between her crowd and mine (which were not exactly the same), Bethanians make up many of our best friends.

**Q. WHAT ARE SOME of the projects you're working on as a member of the Alumni Council?**

As an alumnus, I have remained active with Phi Tau and the College. Our Phi Chapter has a unique foundation called the Harvard Red and Old Gold Club that provides financial support for undergraduate educational opportunities. I benefited from this help as a student, and later I served as an officer for the Club. Returning to campus recently for Phi's 90th Anniversary celebration was just the most recent reminder that the College and the fraternity are special places and not like anything found elsewhere. If someone

were walking on campus the night of the Phi reunion, they would have heard the sounds of Alma Mater sung by more than 100 coming from the Academic Parlour.

Currently, we are working hard to publicize and build a permanent, endowed fund for the Larry Grimes Lecture Series to become the College's premier lecture program by bringing top-notch speakers across disciplines to campus, to launch in the fall. The theme of this exciting new programming is "Bringing The World to Bethany."

On Alumni Council, I've been fortunate to be involved in a forum to communicate with the College and work on key initiatives. I've also met many new friends from across the decades who serve on the Council. Working on the John Taylor Memorial Awards for students and faculty was an honor. These new honors, now part of campus convocations, are accompanied by financial awards for an outstanding student and a faculty member annually. Currently, we are working hard to publicize and build a permanent, endowed fund for the Larry Grimes Lecture Series to become the College's premier lecture program by bringing top-notch speakers across disciplines to campus, to launch in the fall. The theme of this exciting new programming is "Bringing The World to Bethany," and it



Craig Williams '96

requires a substantial fund to generate income to support speakers. Thanks to all who have supported it so far. Please donate today!

**Q. WHO WERE some of the key and influential mentors of your time at Bethany? What did they do for you?**

I had the great benefit of being an English major at Bethany in the mid '90s when the department included Larry Grimes, Lana Landon, Tony Mitch, Robyn Cole and John Taylor, who was technically retired but was active as ever. This was an all-star cast that complemented each other and made for an incredible liberal arts education and a foundation for life — challenging and fun. Dr. Grimes was my advisor and professor for film, poetry and literature, as well as one of the instructors of *Origins of Western Thought III*. His classes were always eye-opening, and I can remember some specific classes and sections because he taught them so vividly. He served as my guide for four years. When I couldn't name the artist (Georgia O'Keeffe) of the flower print on his living room wall, he sent me to John Taylor to get "some culture." Mr. Taylor blared Gregorian Chants, fugues, the bombs bursting in the 1812 Overture and so much more at 8 a.m. in Steinman Hall for Introduction to Music. He later took me and a dozen Bethanians to Oxford for a semester in 1993. When it looked like I couldn't raise the money to go, he offered to pay my way out of his own pocket. Fortunately, I didn't have to take him up on his incredible offer! Shakespeare never came more alive than when he read aloud and then took us from Stonehenge to Stratford to Bath and Coventry Cathedral and countless other historical sites. Bethany was also particularly graced by Lana Landon on faculty for a relatively brief time, but my classmates and I lucked out because it overlapped with our time as students. Dr. Landon was simultaneously exhilarating and terrifying as she opened eyes to British Literature and *Origins II*. I can hear her cackle even now. I don't think that at any other place I could have received a better, more personalized and rigorous education in literature, history and the liberal arts as I did from this amazing group of faculty in the English Department.

As a double major in political science, I also benefitted from several classes with

Clinton Maffett with his focus on globalization long before today's trends became widely evident. Dr. Ken Cosgrove, also another faculty member who was at Bethany a relatively brief time, was instrumental in helping me think through graduate school opportunities, and in vouching for me with his alma mater, the University of Oklahoma, where he was a fellow at the Carl Albert Congressional Research and Studies Center a decade before me. Another faculty member from whom I never had a formal class — Tracy Mauer — also helped shape my education at Bethany. As a professor of communications and advisor to the *Tower* newspaper, Tracy was tough, tenacious and strict while also giving so many students an opportunity to be part of the top-notch publication that she oversaw. Back then, in pre-Internet days, the *Tower's* Friday publication was an event, because she created a culture of excellence that defined it. She stuck up for her students when what we printed may not have always been widely popular, and

**Because I was the beneficiary of mentors at Bethany and in experiences that Bethany helped me attain, I do my best to extend the same experiences to others. Specifically, I always focus on helping people in professional settings learn to improve their writing. Writing is such a key to professional advancement—it is a proxy for deep and clear thinking across fields and opens doors in life.**

I owe her a lot for teaching me this important life lesson.

I think one of the takeaways of this is that Bethany attracts both long-term faculty who dedicate their lives to serving the College as well as incredible faculty who stay for shorter periods of time, but if serendipity strikes for you to meet, these faculty shape lives just as much.

**Q. ARE THERE WAYS you have found to "give back" today by mentoring others in your career or through volunteer work?**

I've had the benefit over several years in various professional settings of supervising younger staff and interns. Because I was the beneficiary of mentors at Bethany and in experiences that Bethany helped me attain, I do my best to extend the same experiences to others. Specifically, I always focus on helping people in profes-

sional settings learn to improve their writing. Writing is such a key to professional advancement—it is a proxy for deep and clear thinking across fields and opens doors in life.

**Q. HOW HAS your professional life benefited from your Bethany education?**

Bethany launches each of us on a progression of personal development. For me professionally, Bethany's focus on writing has been a big boost. I don't count myself as a great writer, but the lessons I learned to improve my writing have helped tremendously. John Taylor for logical order, Lana Landon for depth of analysis, Larry Grimes for vivid imagery and Tony Mitch for precision and depth—all made this happen for generations of Bethanians. Clear writing is a predictor of the ability to do many things in today's "mcnugget" world of short attention spans. It is a rare and priceless skill today, and Bethany makes a difference with its focus across disciplines on improving writing.

**Q. TELL US A BIT about your hopes for the College through the Alumni Council and your continuing engagement with the institution.**

I hope the Alumni Council makes a lasting difference to the College by helping to establish permanent programs that will long outlast any of us while honoring names that belong with Campbell, Pendleton, Cramblet, Phillips, Gresham, Mahaffey, Judy, McGuffie and others. The John Taylor Awards and forthcoming Larry Grimes Lecture Series will hopefully last with the College perpetually. If we can help establish the Grimes Series on strong financial footing and follow up with excellent speakers that bring value to Bethanians (students, faculty and alumni) while also being a forum for engagement across the country, we will be helping to keep the spirit of Bethany strong.

# SPORTS



# VOLLEYBALL CHAMPIONS!

**I**N THE OFFSEASON before the 2013 campaign, head coach Courtney Kline was tasked with replacing a senior class from the Bison women's volleyball team that won 102 games in their career. Kline not only found the replacements needed, but used a roster with no seniors to post the program's third-straight 30+ win season, and to become the first program in the history of the Presidents' Athletic Conference to win 17 conference games.

The Bison opened the season with two consecutive tournaments. Bethany first traveled to Bluffton University where the team notched victories over Bluffton (3-0) and Case Western Reserve (3-1) while dropping matches to Hope College (3-0) and Alma College (3-2).

Bethany then traveled to Marietta College the following weekend and posted a 3-1 record at the River City Tournament. The Bison earned sweeps over Hiram, Marietta and Ohio Valley College before dropping a 3-1 decision to Transylvania in the final contest.

The Bison returned home to host a quad-match with conference opponent Chatham, as well as Pitt-Greensburg and Penn State-Fayette for their first contests at Hummel Field House on the season. The Bison swept away all three teams by 3-0 scores while the Bison defense held their opponents to under a .100 hitting percentage. Against Chatham, the Bison notched a season-best 18 service aces, led by eight from sophomore Mackenzie Lauber.

The quad-match started a streak of dominance for the Bison who won 13 of their next 14 contests. Their only loss came at the hands of the University of Mount Union, who, at the time, was the seventh-ranked team in the nation.

During the streak, the Bison posted nine conference wins and posted nine shutouts, which included 3-0 victories over PAC opponents Grove City, Thiel, St. Vincent, Waynesburg and Geneva.

Sitting at 14-4 overall and 9-0 in PAC play, the Bison had their biggest test of the season, traveling to the Midwest Invitational hosted by Hope and Calvin colleges, taking on three teams ranked in the



Julia Mouch

NCAA top-25. The Bison posted one victory at the invitational, defeating Heidelberg, 3-1. However, Bethany dropped contests to #7 Mount Union (3-1), #12 Wittenberg (3-0) and #18 Chicago (3-2).

The Green and White would return home to begin an eight-game winning streak, with seven of the eight victories coming by a 3-0 score. In their last victory of the streak, Bethany took down Thomas More College for the team's record-setting 17th conference victory. With the win, the team also secured home-court advantage and a first-round bye in the PAC playoffs.

Bethany faced off against Westminster in the semi-final match. The Bison and the Titans would trade blows throughout the contest, with Bethany winning sets one and three by scores of 25-21 and 25-14, and the Titans claiming sets two and four by scores of 25-21 and 25-19, respectively. In the decisive fifth set, the Bison pulled out to a 5-2 advantage and never looked back, eventually taking the fifth game, 15-8, and earning a spot in the PAC Championship contest against Thomas More, who had defeated Geneva College 3-0 in the other semi-final match.

In the finals, the Saints came out



Haley Santymire

swinging, taking the first two sets 25-21 and 25-18. However, the young Bison showed resolve in the face of adversity, as they fought back. Bethany would go on to capture the next two sets 25-19 and 25-23 to force a fifth set. In set five, Thomas More took advantage of seven unforced



Bison errors to take the set, 15-8 and the Championship match, 3-2.

Bethany would regroup from the loss and play host for the Eastern College Athletic Conference's Southwestern Regional Tournament, which also included Grove City, McDaniel College and Marymount University.

The Bison would not be denied in the ECAC tournament, as the team would take down McDaniel College in straight sets in the semi-final. In the win over the Mean Green, freshman Dylan McKenzie led the way with 14 kills.

The Bison would follow that victory with a sweep of Marymount University to capture their fourth-consecutive ECAC championship. Just like in the regular season, it was all about the defense for the Bison, who held both McDaniel and Marymount to under a .100 hitting percentage in the tournament.

For her efforts in the ECAC tournament, sophomore Julia Mouch was named the tournament's most valuable player. She led the defensive effort for the Bison, totaling 32 digs over the two games, which included 20 digs in the three-set championship match.

Following the season, five Bison were named All-PAC performers, with four of the five players being sophomores or freshmen. Lauber, who transferred to Bethany this year for her sophomore campaign, earned First-Team All-PAC laurels following a phenomenal year. The multi-faceted sophomore setter finished the 2013 campaign with 1,298 assists, 205 kills, 214 digs and 38 total blocks. Lauber ranked fourth in the PAC in hitting percentage (.304) and led all setters in the conference in total assists.

Lauber totaled six double-doubles and even notched a triple-double (11 kills/48 assists/10 digs) on Oct. 9 against Westminster. Her 1,298 assists currently rank fourth all-time on the Bethany single-season list.

Dylan McKenzie finished her first year as a Bison by earning First-Team All-PAC honors, as well as the conference's Freshman of the Year award. McKenzie totaled 311 kills in her first campaign as a Bison, appearing in 36 of the 38 matches and playing in 127 games. Her 311 kills not only ranked second on the team, but also ranked first among All-PAC freshmen this season. She was one of just four players in the PAC to eclipse 300 kills on the year.

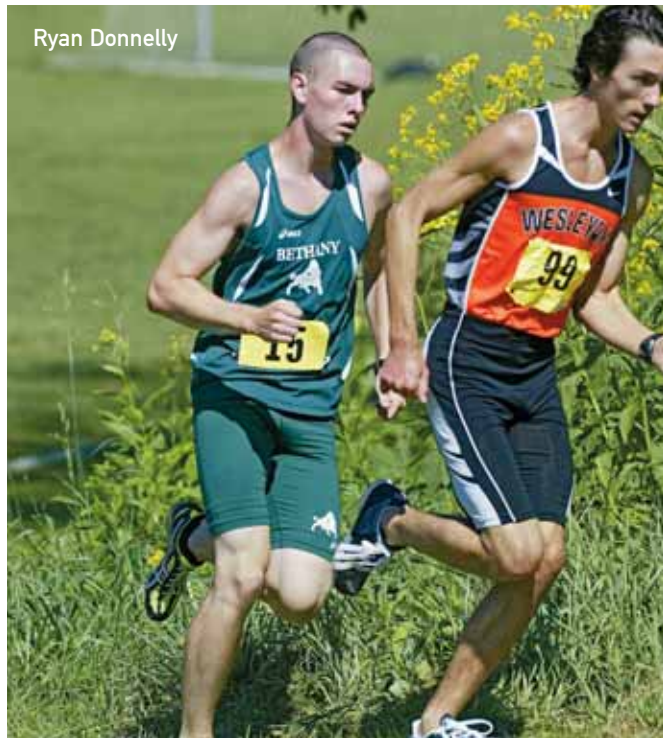
Over the span of the year, McKenzie notched double-digit kills in 13 matches, including 11 of her last 18. Against conference opponents, she totaled 150 kills and averaged 2.46 per game. She also finished the year with 45 blocks.

Mouch and junior Breana Harris earned second-team honors for the Bison, while freshman Dakota McKenzie was named an honorable mention selection.

Along with her All-PAC recognition, Mouch was also named a Capital One First Team Academic All-District selection. Over the course of the season, Mouch ranked third in the PAC in total digs with 610 and was third on the roster in service aces, collecting 42 on the year, including a season-high, four on five different occasions. In the 38 matches played in 2013, Mouch totaled double-digit digs in all but five of those matches, and notched a season-high 28 twice on the year.

Along with her performance on the floor, Mouch also excelled in the classroom as she boasted a 3.96 as a biochemistry major with a double minor in zoology and math.

# BETHANY FALL SPORTS RECAP



Ryan Donnelly

## Cross Country

With just three seniors combined between the men's and women's cross country programs, the Bison runners continued to make great strides in the 2013 season.

On the men's side, the Bison posted two top-five finishes. At their home meet, the Bison Invitational, the men placed second out of six teams and boasted two top-five individual finishers. Sophomore Ryan Donnelly took first place for the first time in his career as he finished with a time of 28:06.1.

Two meets later, at the Pitt-Greensburg Invitational, the Bison men notched a first-place finish, winning the six-team race with a total of 35 points. Once again, Donnelly captured first place, crossing the finish line with a time of 17:34.3 in the 5K race. Dylan Martinez notched a season-best fifth-place finish (18:53.0), while Wesley Scott also cracked the top ten with a ninth-place finish (19:09.5).

At the PAC Championships, Scott crossed the finish line first for the Bison in 22nd place with a total time of 27:34.50. Hunter Ankrom finished in 28:39.80, while Donnelly came in right behind with a time of 28:40.20.

On the women's side, the Bison notched a team-best third-place finish at the Pitt-Greensburg Bobcat Invitational. Sophomore Brooke Bosworth finished a team-high 12th place with a total time of 23:39.0. Alexi Pyles finished in 17th place, crossing the finish line with a time of 24:43.3.

At the conference championships, junior Rhianna Petrone crossed the finished line first for the Bison, finishing a team-best 28th place with a total time of 24:38.20. Bosworth finished with a time of 26:18.10, while freshman Ashley Worst came in with a time of 27:02.70.



Taylor Solomon

## Field Hockey

Second-year head coach Stephanie Bernthal and the Bethany College field hockey team continued to show improvement in 2013. Bethany showed vast improvement in the statistical numbers and had one of its players ranked among the nation's elite.

The Bison started the season slow. That would all change against Notre Dame (Md.) on Sept. 29. The Bison exploded for six goals, en route to a 6-1 victory. Four different players netted a goal, including two each from both senior Courtney Gill and sophomore Taylor Solomon. Freshmen Lauren Rao and Natalie Knauer also chipped in with a goal apiece.

Bethany went on to win their first home contest for the young program, since returning to varsity status. The Bison defeated Oberlin College 4-1, improving their record to 2-9 on the year. The Bison were led by Solomon, who netted two goals in the contest. Rao and Knauer also found the back of the net in the victory.

Although the Bison went on to finish with a 2-12 record, the play of sophomore goalie Jacqueline Harrison and the emergence of Solomon served as highlights for the year. Harrison continued her dominance in front of the net, finishing eighth in the country with 12.43 saves per game. Solomon finished the campaign with 14 points, six goals and two assists.



## Football

It was a season of ups and downs for the Bison football program under first-year head coach Bill Garvey. Finishing the 2013 campaign with a 4-6 record and going 4-4 in the PAC, the Bison captured four conference wins for the first time since the 2010 season, including a home win over eventual Conference Champion, Washington & Jefferson College, the first since 1982, and a win on the road at Waynesburg University, the team's first since 1996.

Bethany started the season, dropping non-conference bouts with Centre College (33-28) and Randolph-Macon University (36-28) and a conference contest with Geneva (51-33).

In the loss to Geneva, the Bison re-wrote the record books as senior quarterback Matt Grimard broke the career record for touchdown passes, surpassing Bob Fromm's record of 51. He also set the single-game marks for passing yards (465) and total offense (485) in the contest. Sophomore wideout Eric Blinn also shattered a Bethany single-game mark, nabbing a Bison best 16 receptions. The mark surpassed the previous game high of 13, which was most recently achieved by Daryl Powell in 2011.

The Bison then went on a three game winning streak with victories over Grove City College, Washington & Jefferson College and Waynesburg University.

Bethany used the emotional highs of homecoming to notch their first victory of the season, as they took down Grove City 34-31. The Bison ran out to a 21-3 halftime lead thanks to two touchdown passes from Grimard to senior wide receiver Chris Collins. Grimard also ran one in to give Bethany the 18-point lead heading into the break.

After outscoring the Bison 28-13 in the second half to pull the game within three points, with 1:22 to play, the Wolverines attempted and recovered an onside kick on their own 48-yard line. However, two plays later, freshman Chanan Scott, with a great defensive effort, intercepted a pass at the Bethany 30-yard line to seal the victory for the Bison, 34-31.

The following week, the Bison took down the Presidents of W&J under the light at Bison Stadium. Once again, the defense exhibited some late-game heroics to ensure the Bison win. Bethany used a solid first half, led by two rushing touchdowns

from junior Phil Acrie, to take a 24-0 lead into halftime.

Coming out of the locker room, the Presidents went on the offensive, scoring the next 19 points of the contest, while holding the Bison scoreless, to cut the advantage to five. With 1:18 to play, the Presidents had the ball at their own 19. After driving to the Bethany 15-yard line, sophomore Aaron Frye picked off a pass in the end zone with 29 seconds on the clock, sealing the Bison victory, the first over W&J in 30 years.

Following a bye week, the Bison again found themselves in a battle, on the road at Waynesburg University. With the game tied at 20-20 with just 2:27 to play in the fourth quarter, the Yellow Jackets drove into Bison territory and set themselves up for a go-ahead field goal. However, the Bison were able to block the try, and took over on the 2-yard line.

Needing to go 98 yards, in 2:20, for the go ahead score, the Bison converted on two crucial third downs. The second, coming on a pass from Grimard at the Bethany 32-yard line to Blinn, which Blinn then took 68-yards for the game winning touchdown with just 20 seconds on the clock. The Bison would go on for the 27-20 victory, which gave them wins over W&J and Waynesburg in the same season for the first time in school history.

Following the victory over Waynesburg, the Bison ran into a streak of bad luck, dropping tough conference contests to Westminster and Thiel, by a combined three points, and eventual conference runner-up, Thomas More.

The Bison finished off their season with a 56-35 victory at Saint Vincent, recording the most points that the program has seen since the 2007 season when the team dropped 66 on the Bearcats.

In the victory, Grimard and Blinn both broke more single-game marks. Grimard hurled six touchdown passes in the win, surpassing the Bethany single-game mark of five, most recently set by Milton Joyner in 2007. Four of those touchdowns were caught by Blinn who broke the Bethany single-game touchdown receptions mark of three, which was previously owned by Eric Walker.

For their efforts on the field, 10 different Bison were named All-PAC selections. Blinn and junior defensive back Wyssmy Despagne garnered first-team honors, while senior offensive lineman Evan Sargo was given second-team laurels. Grimard, Frye, sophomore defensive back Dion Williams, junior punter Stephen Amic, sophomore linebacker Larry Kpadehyea, sophomore defensive lineman Jarret Rahymes and Blinn as a kick returner were all named honorable mention selections.

Along with the all-conference accolades, Blinn was also tabbed an All-South Region Third Team selection by D3football.com. Blinn finished the year with Bethany single-season records in both receptions (95) and receiving yards (1,300) while finishing the year with 8 touchdown receptions. On a national scale, Blinn finished the 2013 campaign ranked second in all of Division III in receptions per game (9.5) and third in receiving yards per contest (130.0).

Grimard finished his football career as one of the most decorated quarterbacks in Bison history. Grimard captured 17 Bethany career, single-season and single-game records during his tenure, and finished his storied career as the only Bison to eclipse 10,000 total yards. He finished his four-year career with 9,463 passing yards, 74 touchdown passes, 11,560 total yards of offense and a 60.3 completion percentage.

Allison Snyder



## Women's Tennis

First-year head coach Ashley Marinacci and the women's tennis team gained valuable experience from this year's campaign. Facing the daunting task of replacing standout Maria Vallone, the Bison roster featured five incoming freshmen, who, by season's end, would begin developing into seasoned veterans.

Although experience was not a strong suit, junior Allison Snyder would do her part to help lead the young Bison. Snyder, who played primarily at No.1 doubles and singles, grabbed victories in two singles matches. The first victory came against Chatham on Sept. 7, with Snyder winning in straight sets (6-0, 6-1). Her second was a 6-0, 6-0 decision in her last match of the season against Franciscan on Oct. 10.

Freshman Katie Vallone was another bright spot on the team, as she secured three wins playing at No. 1 doubles with Snyder. Their first triumph was against Chatham, as they downed the Cougars 8-3. Just a day later, they would nab their next victory when they faced off against Medaille, winning a close match 9-7. The final win of the year came against Franciscan in another 9-7 final.

Although the season didn't go as planned for the Bison, the future is bright with so many young players primed to step up.

Sarah London



## Women's Soccer

Under third-year head coach Peter Parikakis the Bethany women's soccer team continued to show steady improvement in 2013. Bethany increased its goal production by 16 tallies, putting together 35 goals after notching 19 during the 2012 campaign.

The Bison also compiled 25 assists this past season, as opposed to 12 two years ago. They also improved on their shots per game and increased the number of shots on goal in 2013. Despite a 3-16 record, the Bison were on the cusp of winning many more, dropping nine of their games, including five conference games, by just one goal.

In a 4-2 victory over Pitt-Greensburg, freshman Sarah London notched the first multi-goal game of her career, as she recorded two in the victory. Junior McKenna Junkin and freshman Brittany Fullbright also tallied scores. Ten different Bison notched goals in a 15-0 win against Penn State-Beaver. Freshman Julie Slezak led the way with her first career hat trick and was joined as a multi-goal scorer by London, Junkin and junior Taylor Lewis, who all notched two scores.

Following the victory, the Bison found themselves in a five-game slide that included three one-goal decisions, includ-

ing a 1-0 overtime decision to Westminster and a 3-2 loss at Waynesburg. The Bison fought back, notching a 2-0 victory over Chatham University. In the win over the Cougars, Junkin was the star, netting two second-half goals to give the Bison the victory. Sara Hogan and Slezak both tallied assists in the win and freshman Cheyann McQuain registered her second career shutout, posting five saves in the win.

It was a youth movement for the Bison in 2013, as three of the team's top four point scorers were freshmen. Slezak led Bethany, playing in all 19 games and registering 10 goals, three assists and 23 points. She ranked sixth in the conference in goals scored, becoming the first Bethany freshman since Cassie Spalding in 2008 to register 10 goals.

Along with the improvement that the Bison showed on the field, the team also excelled in the classroom, as Bethany boasted a team GPA of 3.31. Fourteen of the 17 athletes on the team exceeded a 3.0 average, with nine posting at least a 3.6. Of those nine, three notched a perfect 4.0 GPA. The Bison graduate just three seniors from this year's roster, and will look to build on the success of their youth as they move into the 2014 campaign.



## Men's Soccer

THE BISON MEN's soccer team improved its record by two wins in the 2013 campaign as the team finished with a 7-12-1 record.

The season got off to a bit of a rocky start as the team dropped its first three contests before picking up a 7-0 victory over Keystone in the Mount Union Invitational. In the win over Keystone, senior Arkangelo James notched his first hat trick of the season and finished the game with eight points, adding two assists.

Including the victory over Keystone, the Bison rattled off three wins over the next four games. The wins also included a 7-0 win over Penn State-New Kensington and a 3-2, overtime victory over Pitt-Greensburg.

In the 7-0 win over Penn State-New Kensington, Lamine Balde netted the first hat trick of his career.

James added two goals and both Oumar Balde and Yannick Niedworok scored their first career goals.

In the overtime win over Pitt-Greensburg, the Bison got two second-half goals to erase a 1-0 halftime deficit, but saw the Bobcats notch the equalizer late in the second half. James then scored the game-winning goal on an assist from Adam Gibboney to improve the Bethany record to 3-4 to open the season.

Following the win vs. Pitt-Greensburg, the Bison suffered their second three-game slide of the season, dropping games to Marietta (3-2), Carnegie Mellon (5-0) and Muskingum (2-0) before capturing a victory over Mount Aloysius, 2-1. In the win over the Mounties, the Bison once again erased a 1-0 halftime deficit. Niedworok scored his second goal of the season, notching

the game at 1-1, before James notched the game winner on a penalty kick to give Bethany its fourth win of the season.

The Bison got off to a slow start in conference play as they posted a 0-2-1 record through the first three games, which included a 1-1 tie against Westminster. Following that stretch, Bethany rattled off its longest winning streak of the season, including conference wins over Waynesburg (2-1) and Thiel (2-0) and a non-conference win over Penn State-Beaver (6-0).

In the 2-0 victory over Thiel, James and Balde registered goals as Callum Appleby totaled the fourth shutout of his freshman campaign.

At the conclusion of the season, James was named Presidents' Athletic Conference Player of the Year for the second season in a row, and was also given the nod as a First-Team All Great-Lakes Region honoree by the National Soccer Coaches Association of America. Along with those accolades, James was also named a Corvias Eastern College Athletic Conference (ECAC) South Regional First-Team All-Star.

James finished the 2013 season with a career-high 44 points (18 goals, eight assists) and led the league in all offensive categories. He also finished his career tied for second in school history with 66 career goals and third in school history with 156 points.

Balde also had a great senior season in which he set career highs in goals (nine), assists (six) and points (24). He also ranked second in the conference, only behind James, in shots (81), shots per game (4.05), points (24) and was third in goals scored on his way to Second Team All-PAC honors.

# BETHANY PUTS 33 ON PAC ACADEMIC HONOR ROLL

A total of 33 Bethany College student-athletes were named to the Presidents' Athletic Conference Academic Honor Roll for the 2013 fall semester. The PAC academic honor roll recognizes those on all fall varsity athletic programs who earned a grade point average of 3.6 or higher on a 4.0 scale during the semester of their competition.

The women's volleyball program placed the most athletes on the PAC Honor Roll, as nine players were honored. Women's

soccer and the cross country teams boasted seven each on the honor roll while five from the football program were honored. Three women's tennis players were also named, along with two from the men's soccer program.

Of the 33 who were named to the Honor Roll, 13 of those student-athletes earned a perfect, 4.0 GPA. Below is a complete list of Bethany's honorees:

## Bethany's Spring 2014 PAC Academic Honor Roll Honorees



NAME	YEAR	MAJOR	SPORT	HOMETOWN/H.S.
Hayley Acree	SR	Elementary Education	WSOC	New Martinsville, W. Va./Tyler
Stephen Amic	JR	Accounting	FOOT	McDonald, Pa./West Allegheny
Kelly Becquet	JR	Accounting	VBALL	Finleyville, Pa./Ringgold
Bethany Bowers	SO	Social Work	WSOC	Clear Spring, Md./Clear Spring
Paige Bragg	SO	Biochemistry	VBALL	Huron, Ohio/Huron
Catherine Breault	SO	English	WXC	Moundsville, W. Va./Bishop Donahue
Briana Breault	SR	Psychology	WXC	Moundsville, W. Va./Bishop Donahue
Alexis Castro	FR	Psychology	VBALL	Lorain, Ohio/Lorain
Marena Cline	FR	Undecided	WSOC	Follansbee, W. Va./Brooke
Cam Cooper	SR	Financial Economics	FOOT	Hurricane, W. Va./Hurricane
Ryan Donnelly	SO	Mathematics/Pre-Engineering	MXC	Pittsburgh, Pa./Penn Hills
Brittany Fullbright	FR	Biology	WSOC	Wadsworth, Ohio/Wadsworth
Matt Grimard	SR	Social Work	FOOT	Lowell, Mass./Dracut
Sara Hogan	SR	Psychology	WSOC	Beaver, Pa./Beaver Area
Rebekah Hudock	SO	Psychology	WXC	Uniontown, Pa./Laurel Highlands
Charlotte King	SR	Communication/Media Arts	WXC	Harpers Ferry, W. Va./Washington
Brooks Kursey	JR	History	FOOT	Martinsburg, W. Va./Hedgesville
MacKenzie Lauber	SO	Education	VBALL	Mansfield, Ohio/Madison-Mansfield
Lynsie Mandt	JR	Education	VBALL	Columbus, Ohio/Worthington Kilbourne
Nada Markovic	FR	Undecided	WTEN	Brcko, Bosnia and Herzegovina/ Liselotte Gymnasium
Kelsea Martz	SO	Psychology	WXC	Hedgesville, W. Va./Hedgesville
Cody McElhaney	SO	Communications	MSOC	Aliquippa, Pa./Hopewell
Julia Mouch	SO	Biochemistry	VBALL	Toledo, Ohio/Sylvania Southview
Yannick Niedworok	JR	Undecided	MSOC	Manheim, Germany/Heidelberg
Bethany Pohjala	FR	Pre-Engineering	VBALL	Lima, Ohio/Lima-Shawnee
Allie Powell	FR	Biology	VBALL	Indianapolis, Ind./Lawrence Central
Jake Riddell	SO	Mathematics/Physics	FOOT	Hopewood, Pa./Laurel Highlands
Amber Ridings	SR	Accounting	WTEN	Inwood, W. Va./Musselman
Julie Slezak	FR	Elementary Education	WSOC	Latrobe, Pa./Greater Latrobe
Allison Snyder	JR	Economics	WTEN	Newcomerstown, Ohio/Newcomerstown
Lindsay Sparr	SR	Psychology	WSOC	Shreve, Ohio/Triway
Jennifer Urbaniak	FR	Pre-Physical Therapy	VBALL	Bellbrook, Ohio/Bellbrook
Ashley Worst	FR	Equestrian Studies	WXC	Cuba, N.Y./Apollo-Ridge

# BETHANY BISON HALL OF FAME

## FOUR NEW MEMBERS INDUCTED



THE BETHANY COLLEGE Athletic Hall of Fame inducted four new members during Homecoming festivities at the school on Sept. 27-28, 2013.

The 2013 Hall of Fame Class included men's basketball and golf athlete Keith Schubert '03, women's basketball standout Rosanne Scott '00, softball record-holder Rachael Schafer '03 and three-sport athlete Robin (Sayre) Pietryk '90.

Keith Schubert came to Bethany from Girard High School in Girard, Ohio,

where he earned All-Conference honors in 1996, 1997 and 1998. During that time he was also awarded with Conference Player of the Year honors. As well as his accomplishments on the court, Schubert also excelled in the classroom, earning National Honors Society recognition.

Once at Bethany, Schubert continued his athletic prowess on the court. The four-time all-conference performer was named PAC Freshman of the Year in 1999 and was also given the nod as the

PAC Player of the Year in both 2001 and 2002. Also in 2002, Schubert earned D3hoops Honorable Mention All-American status after leading the team to the NCAA Tournament and an opening round win over Pitt-Bradford before falling to eventual National Champion Otterbein in the second round. In the postseason, Schubert averaged 39 points a game over the two contests.

Schubert also had an impact on the Bethany record books during his time

with the Bison. Most notably, Schubert remains Bethany's all-time leading scorer and the only men's basketball player in the history of the institution to eclipse 2,000 points, as he ranks first all-time with 2,127 points. Along with the scoring record, Schubert ranks eighth all-time in career rebounds (711) and blocked shots (44).

Schubert also has the top scoring season of all time, scoring 759 points in the 2001-02 season, which is 121 points higher than anyone else in school history. He also ranks first in free throws made (184 in 2001-02) and is third in points per game (26.2 in 2001-02). His single-game mark of 45 points against Ohio-Eastern in 1999 also tied the school record at the time, a record that hadn't been reached since 1965.

Schubert currently resides in Girard, Ohio, with his wife Dana and their two daughters, Gianna and Briella.

Rosanne Scott was a standout at Struthers High School before coming to Bethany. A four-year performer on the women's basketball program, Scott earned four all-conference honors, garnering honorable mention honors as a freshman, second-team honors as a sophomore, and first-team laurels as a junior and senior. As a senior Scott was also named Player of the Year in the conference as well as in Northeast Ohio, and also earned first-team all-state.

After earning PAC Freshman of the Year distinction and First Team All-PAC in 1996, Scott went on to earn three more First Team All-PAC selections and two PAC Player of the Year awards. Along with those honors, Scott was a D3hoops Third Team All-American selection in 2000. During her tenure, she helped the Bison to three PAC Championships and two trips to the NCAA National Championship tournament.

At the conclusion of her career, Scott stood first on the all-time scoring list and currently still ranks third on that list today with 1,636 career points. She also still owns the record for career assists (493), as well as career steals (323). Scott also ranks third on the all-time list in

career three-pointers made with 152. Her 47-point performance against Point Park on Jan. 6, 1998, is still the most points ever scored by a Bison in a single contest.

After her time at Bethany, Scott was hired as the head women's coach at Westminster at the age of 24, making her the youngest head coach in the country at that time. Scott has twice led Westminster to NCAA Tournament appearances and a PAC Championship in 2004.

Dr. Robin (Sayre) Pietryk came to Bethany from East Liverpool High School, where she was a three-sport athlete, earning all-conference honors in volleyball, basketball and softball with the Potters. Following her time in high school, Pietryk was a three-sport athlete for the Bison.

During her four seasons, Pietryk earned 12 varsity letters, earning four each in volleyball, basketball and softball. On the volleyball court, Pietryk earned Second-Team All-PAC honors in 1988 and followed that with a First-Team All-PAC selection in 1989. Her 888 kills currently rank ninth all-time in Bethany history.

Along with those accomplishments, Pietryk still holds the top mark for career digs, having registered 2,516. That record has now stood for 25 years. Pietryk also owns the top two spots for digs in a season finishing with 941 in 1987 and 919 in 1988.

On the softball diamond, Pietryk also excelled, earning First Team All-PAC in 1989 and 1990. She was also given the nod as a District II GTE Academic All-American in 1990.

After graduating in 1990 with a bachelor's degree in interdisciplinary studies, Pietryk continued to excel, this time in the coaching ranks. Currently, Pietryk is in her 14th season as the head volleyball coach of the North Carolina Wesleyan Battling Bishops, where she currently ranks as the winningest coach in program history with 234 career victories. She has most recently led the Battling Bishops to six straight 20-win seasons from 2007-2012. Along with those accomplishments, Pietryk also earned her Ph.D. in 2008 from Walden University, specializing in higher education.

Today, Pietryk live in Nashville, N.C., with her husband John and two sons, Christopher and Jeremy.

Rachael Schafer is arguably the most successful pitcher the Bethany College softball program has ever seen. Schafer came to the Bison after serving as a four-year starter at the Perry Traditional Academy in Pittsburgh.

During her time at Bethany, Schafer earned PAC Pitcher of the Year in all four seasons from 2000-2003. She was also named conference MVP three straight seasons from 2001-03 and First Team All-Conference all four years. Along with those honors, Schafer was a three-time NCAA All-Region selection and earned All-American laurels twice, garnering a Third Team selection in 2003 and First Team honors in 2002.

Schafer has also had a lasting impression on the Bison All-Time record books. Her 2001 ERA of 0.56 remains the top single-season performance in Bison history. Along with that record, Schafer ranks first all-time in career victories (63), strikeouts (463), ERA (1.08) and shutouts (29). During her tenure, Schafer posted 70 complete games in 80 career starts.

Schafer helped lead the Bison softball program to four straight PAC Championships. The team also earned an NCAA Regional Championship and the program's first-ever berth in the Division III College World Series in 2002.

Shafer has been enlisted in the US Army since 2005 and is still currently serving today. Schafer has been a participant in four different combat tours and has been recognized with two Bronze Stars, three Army Accommodation Medals, two Army Achievement Medals and one Joint Accommodation Medal by the United States Military for her actions and bravery in the service.

The newly inducted members of the Bethany Hall of Fame were presented plaques at Bison Stadium during the pregame ceremonies before the Homecoming football game against Grove City.



# BRIAN ROSE ROUNDS OUT FIRST YEAR AS ATHLETIC DIRECTOR

## Oversees a department that includes 22 intercollegiate sports

AFTER 13 YEARS as Bethany's sports information director, Brian Rose now has more than a year as the Director of Athletics and Recreation under his belt. Rose became the acting director in February 2013, and was officially promoted in July.

A 1998 Bethany graduate, Rose oversees a department that includes 22 intercollegiate sports, an equestrian club team, and an extensive lifelong fitness and recreation program. By number of sports, it is the largest athletics department of any college or university in West Virginia.

"Brian Rose has earned the opportunity to lead the Bethany athletic department," Dr. Miller said. "He is passionate about his alma mater, widely respected in the profession, and liked and admired by the campus community as a whole."

A native of Imperial, Pa., and graduate of West Allegheny High School, Rose earned his Bachelor of Arts degree in

Sports Communication from Bethany in 1998. He joined the staff of Bethany as Sports Information Director after graduation, a position he would hold for more than five years. Rose then went on to serve as the SID at Carnegie Mellon University and Allegheny College.

In August 2005, Rose returned home to Bethany to once again serve as the SID. Rose was the host SID for nine PAC Championship events and three ECAC Tournaments and promoted eight of the school's 15 Academic All-Americans. Two-time Academic All-American volleyball standout Jessica Zavatchen was last year's Bethany Valedictorian and Johnathan Foster, Academic All-American and Campbell Trophy semi-finalist, was recipient of the prestigious Francis O. Carfer Prize as the Outstanding Senior.

"I am honored and thankful that Dr. Miller and the College administration have given me the opportunity to lead

this athletic department," Rose said. "I look forward to working with our dedicated staff to not only add to Bethany's already rich tradition that includes a national championship in men's soccer, more than 90 PAC titles and 63 NCAA appearances, but to also provide the best possible experiences for our talented and engaged student-athletes."

Rose has taken the helm of a Bethany program that is in a period of transformational growth. During the past five years, the College has added intercollegiate teams in lacrosse and field hockey and equestrian as a club sport. Funds have been raised to add artificial turf, lights and a new all-weather track at Bison Stadium, new locker room facilities, and significant improvements to weight lifting and fitness facilities.

Rose and his wife Rebecca, a 2001 grad of Bethany and the school's Director of Communications, reside in Bethany.



“Bethany would not be the transformational institution that it is without mentors who can be found throughout the campus community.”

— President Scott D. Miller

# BETHANY TODAY CLASS NOTES

**We'd love to hear from you!**

We're interested in hearing how you are doing. Send or email your engagements, marriages, births, promotions or other news to be published in Bethany Today.



Members of the Hoag family with President Scott D. Miller and former men's soccer coach John Cunningham after the rededication of Hoag Field Sept. 28, 2013. The field was named after the late William Hoag, a longtime member of Bethany's Board of Trustees. The field was originally dedicated to him in 1990 after undergoing an extensive renovation for which Hoag provided much of the funding.

After a career that consists of working on the Manhattan Project, teaching, and raising seven children with his late wife, 91-year-old **DR. RAYMOND SHELIN** '43 still hasn't stopped working. His latest title is property developer, as he's currently working to sell a remaining 43 home sites in Tallahassee, Fl.

The Society of American Business Editors and Writers honored **DR. EUGENE MILLER** '47 with the President's Award in Washington, D.C., in April for his decades of service as a founder of the society.

**JOSEPH H. "JOE" NEWMAN** '49 was honored Sept. 21, 2013, as the "2013 Conservation Volunteer of the Year and Conservation Hero" by the Cuyahoga County, Ohio, Soil and Water Conservation District.

**DON FORD** '53, **GEORGE TAIBI** '53 and **DR BRUNO SICHER** '54, who were

all members of Sigma Nu while at Bethany, reunited at Homecoming 2013. The three also called a few fellow classmates who weren't able to attend.

**NICK BERRY** '58 and **JANET GLERUM BERRY** '57 traveled to England in June 2013 where they were hosted by **PETE PERRY** '59 and **JEAN HAGGERMEYER PERRY** '59 at their cottage. Jean and Pete celebrated Jean's birthday in Bayeux, France, in August 2013.

**BOB GOIN** '59 was inducted into the National Association of Collegiate Directors of Athletics Hall of Fame on Friday, June 14, 2013 at NACDA's 48th Annual Convention.

**DR. LINDA LEWIS** '61 was honored with a P&S Distinguished Service Award at Columbia University College of Physicians and Students.

**JOHN OSBORNE** '63 was invited to Youngstown State University's Williamson College of Business Administration as a guest lecturer on Nov. 20, 2013, to speak on "Things You Won't Learn in College."

**JOHN LEAVITT** '66 was a guest writer for Oregon State's Pauling Blog honoring their alumnus and two-time Nobel Prize winner, Linus Pauling.

**DR. ARTHUR B. KEYS JR.** '67 Founder, President and CEO of International Relief and Development (IRD), has been invited to join the Council on Foreign Relations.

**RON SWAGER** '68 co-wrote "Day of the Elephants," a true story of Roland Deah's life in Liberia, where he survived a civil war.

Magistrate Judge **MARGARET J. KRAVCHUK** '70 retired Jan. 24. Kravchuk has had a long and distinguished career of public service.

**STEPHEN B. RUBEN '70** of San Francisco has been named to "Top Lawyers in California" by The Legal Network for 2013.

**SUSAN CHUTE '72** is an archival consultant for Women's Studio Workshop in Rosendale, NY. She previously worked as Supervising Librarian of the Art and Picture Collections of The New York Public Library.

West Virginia poet laureate **MARC HARSHMAN '73** traveled to the Library of Congress in Washington, D.C., to participate in a series of interviews, "The Poet and the Poem from the Library of Congress."

**DAVE SIMS '75**, the play-by-play broadcaster for the Seattle Mariners, made an appearance on MLB Network's "Hot Stove," during which he discussed what it's like calling multiple no-hitters.

**ANGIE BADO '77**, owner and publisher of [www.townsquarebuzz.com](http://www.townsquarebuzz.com), celebrated the opening of the business' new office space in March 2013 in downtown McKinney.

**RUSS VANDERBEEK '77** retired after 24 years as a trainer and business practices coach for financial advisors. He and his wife Barb have been married for 30 years.

**MARK STOECKLE '78** has been named CEO at Baltimore fund companies Adams Express Co. and Petroleum & Resources Corp. He was previously employed as the chief investment officer of the U.S. Equities and Global Sector Funds for BNP Paribas Investment Partners in Boston.

West Virginia Gov. Earl Ray Tomblin reappointed **GEORGE COUCH '79** to serve on West Liberty University's Board of Governors as Vice Chairman in an announcement made Aug. 16, 2013.

**BOB MCCANN '80** was recently featured in a *Forbes* article, "Tale of Two Bankers: Bob McCann, Sergio Ermotti Are Reinventing Wall Street." He is now the CEO of UBS Group Americas.

**JEFF FLICK '82**, president and CEO of BD&E, one of the Pittsburgh region's most nationally recognized branding and marketing communications firms, won eight awards in the 28th Annual Educational Advertising Awards competition.

**GEORGE MANAHAN '83** received the West Virginia Public Relations Society Lifetime Achievement Award at a dinner in Charleston, W.Va., on Nov. 13, 2013.

**GARY GUISE '86** was named President and Chief Operating Officer of Lifeplans, Inc. in June 2013.

**SHERRI LYNN WOOD '86** was awarded the prestigious 2012 Joan Mitchell Foundation Grant for Painters and Sculptors and is currently working on her first book about improvisational process and quilt making. You can see her work at [www.daintytime.net](http://www.daintytime.net).

**DR. ERIC MCDOWELL '87**, chair of the department of mathematics and computer science at Berry College in Georgia, writes songs about mathematics as a hobby. "The Calculus Priority Dispute" is his newest addition about the invention of calculus and can be found on YouTube.

**SEAN MCBRIDE '90**, former Executive Vice President for Communications & Membership Services at the Grocery Manufacturers Association, left the organization to re-constitute his public relations and consulting firm, DSM Strategic Communications & Consulting.

**THE REV. THADDAEUS ALLEN '92**, regional minister and president of the National Benevolent Association (NBA) of the Christian Church (Disciples of Christ), in partnership with the Christian Church (Disciples of Christ) in West Virginia recently announced the launch of a pilot initiative, the "Gift of Years Project," a ministry centered on, for, and with older adults.

**DAVID A. GEORGE '92** and author of "Be Unique, Be You and Live!" spoke on two discussion panels at the 44th Autism Society of America's National Conference and Exposition in Pittsburgh in July, 2013.

**TODD OWENS '93** "will help you find the right job, if you want to do right in the world," the *Pittsburgh Post-Gazette* said of the executive recruiter and co-founder of Nonprofit Talent. The article is titled "People to Know Around Pittsburgh in the New Year."

**JOYCE DEFRANCESCO '99** was named Director of Media Relations for the Pittsburgh Symphony Orchestra in June 2013.

**RYAN HEMMINGER '01** was named a partner of the Pittsburgh firm Leech Tishman. Recently, Ryan was instrumental in a jury trial resulting in a \$2.3 million verdict in a construction contract dispute.

**JUSTIN JAKOVAC '02** was recently appointed as the director of the National Council for History Education.

**NEVADA SMITH '02** has been hired as the head coach of the Rio Grande Valley Vipers, an NBA Development League team of the Houston Rockets.

**MICAH (GRAHAM) SOUTHWOOD '02** will be on the cover of the August 2014 *Pittsburgh Wedding Magazine* after winning an online competition. Her wedding was also featured on TLC's "Four Weddings."

**JASON BROADWATER '03** has been named the assistant dean of Duquesne University's McAnulty College and Graduate School of Liberal Arts.

Fourth grade teacher **ERIC DAY '04** was featured in the Capital Gazette, in which he discussed how his class raised and released terrapins.

**MARCIA (HAUGHT) LAWRENCE '04** completed her residency at Washington Hospital Family Medicine, where she was elected chief resident. She is now part of a practice with Dr. Carlos Jimenez.

**BEN BROWNLEE '06** was named Associate Commissioner with the Mountain East Conference in July 2013.

**MIKE DRAHOS '06** was named The University of Pittsburgh at Johnstown's head women's basketball coach.

**JOSEPH R. WILLIAMS '06**, an associate of Pollock Beggs Komar Glasser & Vertz LLC, has been named to the list of 2013 Lawyers on the Fast Track by *The Legal Intelligencer*. He was also elected to serve as chair of the Young Lawyers Division of the Allegheny County Bar Association.

**KURT BENEDICT '07** was named the new Executive Director of WATCH, the Wheeling Area Training Center for the Handicapped. The program provides vocational training and services to individuals with disabilities.

## Alumni Council

**BRUCE FAHEY '77**

*President*  
Akron, Ohio

**PATRICK HOSEY '80**

*Vice President*  
Wilmington, Del.

**KRISTIE (BOWER) BARNETT '97**

St. Clairsville, Ohio

**JOELLE BLAHO-SINCLAIR '90**

Pittsburgh, Pa.

**KRISTI (KAMINSKI) BUREN '93**

Lutherville, Md.

**JULIA DIVEGLIA '03**

McDonald, Pa.

**JERRY GAST '75**

Amsterdam, Ohio

**RYAN HEMMINGER '01**

McKeesport, Pa.

**CHRISTINE LEMLEY '93**

Potomac Falls, Va.

**D. SEAN MCBRIDE '86**

Fairfax, Va.

**AMY CALLAHAN '95**

*Engagement Chair*  
Wilmington, N.C.

**CRAIG WILLIAMS '96**

*Advancement Chair*  
Odenton, Md.

**KERRY MCCANN '77**

Pittsburgh, Pa.

**LARRY MELTZER '81**

Dallas, Texas

**TOM MILLER '77**

Allison Park, Pa.

**DAVID SEIDMAN '65**

Alexandria, Va.

**JESSICA (SWANN) SKYWATCHER '00**

Pittsburgh, Pa.

**APRIL STARINSKY '02**

Orlando, Fla.

**DANIEL VANPELT '95**

Alexandria, Va.

Bethanians in the wedding were

NATE SMITH '04, TJ CIPOLETTI '05, KATE (RAYNOVICH) NESBITT '06, KRISTEN LAING '06, NEIL HEARD '06, TIFFANY (LATIMER) CIPOLETTI '07, and JOHN MCLANE '07.

PENNIE THOMAS '06 and Brian J. Scarpone were married Feb. 5, 2011, in Steubenville, Ohio. AMANDA (THOMAS) TACHIOR '02 was in the wedding.

CARLA VANDZURA '07 and John Shearer were married Aug. 24, 2013, in Lingrow Farms, Pa. Bethanians AMANDA (TOURNAY) DIAZ '08, ELIZABETH (OBLOY) HLADEK '08, JEN RICKEY '07, and STEPHANIE RIKER '07 served as bridesmaids. AMANDA (KURTA) STARK '07 performed a reading and REV. CHRISTOPHER STARK '06 officiated.

CAITLIN DIEGUEZ '09 and JOSEPH MCLANE '07 were married on June 15, 2013 at St. Peter's Cathedral in Steubenville, Ohio. Bethanians in the wedding were SARAH (BLAKELY) FOX '08, TARA PLETCHER '07, ALICIA MADER '09, NICOLE SALOPEK '11, JOHN MCLANE '07, JOHN BUTTERWORTH '07, TYLER SCHERER '09, and RYAN KEMP '08.

SHEILA SCHRADER '09 and MICHAEL KLAMERUS '08 were married on June 29, 2013 at St. Gabriel's in Pittsburgh, Pa. Bethanians DAN BERTY '06 and TIM DYE '08 served as groomsmen.

RACHEL REED '09 and Daniel Lutz were married June 28, 2013, in Wheeling, W.Va. Bethanians in the wedding were SARAH (REED) LIEB '07 and ERICA (PIETRANTON) YACOVIELLO '09.

LARA TICHNELL '09 and Aaron Kline were married Aug. 13, 2011, in Cumberland, Md. TIFFANY FURBEE '10 was in the wedding.

## BIRTHS

J. DREW MCFARLAND '83 welcomed his daughters Lena Ailin Boaz and Barbara Isabella Dent on Feb. 4, 2013.

MARELLA (KAZOS) MCCONNELL '95 and husband Calvin McConnell welcomed their daughter Mallory Deanna on August 27, 2013.

SARAH (KRYC) SCHIMMEL '02 and MAX SCHIMMEL '02 welcomed their daughter Brielle McKenna on April 2, 2013.

LAUREN (DEMUNDO) MARTIN '03 and PATRICK MARTIN '03 welcomed their son Colin Fred on Jan. 19, 2013.

SHAYE (EIGHME) PENTINO '03 and ALEX PENTINO '03 welcomed their son Davis Alexander on Dec. 5, 2013.

**WHITNEY WILDING '07** spent time in Yida, South Sudan, as an employee of Doctors Without Borders.

**CASEY R. GRAY '09** continues to serve as an adjunct professor of music at State University of New York at Fredonia, where he teaches all foreign language diction courses for the school of music.

**EMILY BIGLEY '11** ran a half-marathon May 5, 2013, to raise money for the Caroline Previdi Scholarship.

**ANNIE GROGAN '13** was awarded one of four inaugural John and Maxine McCaw Scholarships for Prophetic Living, Teaching and Preaching. Grogan, of Kailua, Hawaii, attends Brite Divinity School

## MARRIAGES

**LAURIE ANDERSON '82** and George Price were married Sept. 29, 2012, in Buckhead, Ga.

**CONNIE FORNEY '86** and Alan Courson were married Nov. 10, 2012, at St. Mark's Lutheran Church in Butler, Pa.

**ELIZABETH CALDWELL '02** and Robert Shapiro were married Aug. 4, 2013, in Ligonier, Pa.

**MICAH MARIE GRAHAM '02** and Andrew Evan Southwood were married on September 28, 2013 at First Presbyterian Church in Pittsburgh, Pa.

**KELLY CHANEY '05** and Brett Murawski were married Sept. 29, 2012 at Bella Sera in Canonsburg, Pa.

**LINDSAY CAPRARESE '06** and **BENJAMIN FEELSER '05** were married at St. Paul's Episcopal Church in Mt. Lebanon, Pa., on June 15, 2013. Bethanians in the wedding were MATTHEW CAPRARESE '00, ANDREW CAPRARESE '03, DAVID GOODWIN '06, NICK KERBER '06, ERIC SPERLAZZA '06, BIANCA (BARNABEI) GOODWIN '06, NATALIE (MCCALL) JASKOWSKI '06, BRITTANY VAVREK '06, DANA (GUMP) KIRCHNER '06 and PATRICIA (SKYWATCHER) CAPRARESE '04.

**LISA CHRISTINE STORY '06** and **KENNETH LOUIS HOPPER '06** were married June 28, 2008 in Commencement Hall in Bethany.

LINDSAY(SHREWSBURY) YARBROUGH '03 and Chad Yarbrough welcomed their daughter Haley on July 1, 2013.

JAMIE (HOELZEMAN) RADICK '04 and STEVE RADICK '03 welcomed twin girls Callan Eleanor and Kendall Grace on Dec. 27, 2013. They join big sister Anabelle.

DANA (BERNACKI) RITTER '04 and Shannon Ritter welcomed their son Liam Nicholas on Aug. 6, 2013.

MARYBETH (WHEELER) VAN BOXEL '05 and ADAM VAN BOXEL '04 welcomed their son Alexander on April 13, 2013.

PENNIE (THOMAS) SCARPONE '06 and Brian J. Scarpone welcomed their daughter Lena Giovanna on July 15, 2012.

MEREDITH (VANSANT) SHAH '06 and RANDY SHAH '03 welcomed their son Julian Patrick on Jan. 9, 2014. He joins big brother Xavier and big sister Emelia.

COURTNEY (IRWIN) DRAHOS '07 and MICHAEL DRAHOS '06 welcomed their daughter Caroline Noelle on Dec. 26, 2013. She joins big brother Miles.

HEIDI (JENKINS) WILLIAMS '07 and CLAYTON WILLIAMS '07 welcomed their daughter Scarlet Ann on March 21, 2013.

ANGELA (SCHRIVER) MARKER '08 and Jessie Marker welcomed their daughter Rylie Ann on April 17, 2013.

RIKKI (JAVARONE) REGAN '08 and Sean Regan welcomed son Liam Joseph on April 24, 2013.

LAUREN (TESTA) MASUCCI '10 and BRIAN MASUCCI '07 welcomed their daughter Mia Bella on Sept. 2, 2012.



Members of the Class of 1973 celebrated their 35th reunion during Homecoming 2013.

Jennie Steindorf Renner Chair of Fine Arts and Professor of Fine Arts, Curator of Permanent Art Collections and Director of the Renner Art Gallery Kenn Morgan; Judy Allison, and President Scott D. Miller before the 13th annual Allison's Run Sept. 28, 2013.



Members of the Bethany College 1983 graduating class celebrated their 30th reunion during the Homecoming 2013 tailgate.

## IN MEMORIAM

JELIZABETH HITTENBERGER SIPE '37  
October 20, 2012

RUTH GARNER SHEERAN '38  
November 10, 2013

M. GENEVA BAMFORD STRUWING '38  
May 28, 2013

MARJORIE WILT BELL '40  
August 7, 2013

JANE BRYAN LYNCH '40  
December 29, 2012

WILLIAM MURRAY '40  
November 1, 2013

MARIE LOWE THOMAS '40  
September 5, 2013

NANCY OBERMAN BAKER '41  
April 14, 2013

PAUL RAUB '41  
September 28, 2012

MYRA JACKSON CURTIN '42  
January 20, 2013

ALICE CAMPBELL FAIR '42  
June 30, 2013

FLORA SMITH FARMER '42  
March 29, 2013

MARY HARE FOULK '42  
January 11, 2013

GRACE FRANCIS '42  
March 18, 2014

ELOISE MCCAUSLEN JENKINS '42  
June 4, 2013

JANE WILLIAMSON DAY '43  
September 12, 2012

JEAN MCCROBA HARPER '43  
January 16, 2013

MARIAH OKWEJI SMITH JUSTICE '43  
March 13, 2014

JOHN MEDICK '43  
February 1, 2014

A. THOMAS OTTO '43  
February 23, 2014

MARJORIE HUNTER COPENHAVER '44  
February 3, 2014

F. MELVIN SWEENEY '44  
January 16, 2013

JEANNE STYER YOUNG '44  
September 8, 2012

HAROLD CARSTENSEN '45  
February 20, 2013

MARION CULLEY GARDNER '45  
May 11, 2013

JEAN DODD KAISER '46  
January 29, 2014

ISA LAZEAR KELLER '46  
May 3, 2013

JUANITA WILLIAMS KENDALL '46  
November 3, 2012

JAMES COLEMAN '47  
March 9, 2013

EUGENE HOFFMAN '47  
March 17, 2013

PATRICIA FAGAN LEHR '47  
October 25, 2012

DOROTHEA FURBER WASSMANN '47  
November 8, 2012

FURMAN ARTHUR '48  
July 19, 2013

DONALD CLOUDSLEY '48  
November 22, 2012

JEAN PINNEY HAYMAN '48  
November 14, 2012

ROBERT RENNER '48  
September 8, 2013

NICHOLAS MAMAKOS '49  
January 25, 2013

SALLY SCHREIVER BADO '50  
January 25, 2013

PERRY BOWDEN '50  
July 25, 2013

ALBERT CHAPARIAN '50  
June 27, 2013

PERRY CULVER '50  
July 20, 2013

JACK GWENNAPE '50  
October 4, 2012

ROBERT HANKEY '50  
December 23, 2012

KENNETH KINDIG '50  
December 14, 2012

HARRY MARTENS '50  
October 21, 2013

ELVIRA FORGES PACKER '50  
June 17, 2013

GLENN SCHREIBER '50  
November 22, 2013

JOHN ATKINS '51  
October 15, 2012

TED CAMP '51  
February 26, 2013

STEPHEN FORTUNATO '51  
January 27, 2013

KENNETH KERSHAW '51  
November 1, 2012

RHODA KRUSE '51  
November 19, 2012

J. PARK MCMULLEN '51  
September 6, 2012

RAYMOND TOMASSEN '51  
September 10, 2012

THEO CHRISTMAN '52  
March 26, 2014

FLORENCE OLTMER INSLEE '52  
February 8, 2014

ARTHUR MURK '52  
November 12, 2013

GORDON ANDERSON '53  
November 12, 2013

AUDREY COLE CHRISTMAN '53  
June 15, 2013

GLENN MASSAY '53  
January 28, 2013

CARL REED '53  
November 2, 2012

ERNEST ALLISON '54  
April 4, 2013

GUY DAVIS '54  
February 26, 2013

SHIRLEY ECKBERG MORRISON '54  
November 12, 2012

ROBERT MYERS '54  
October 15, 2013

GEORGE LARIMER WILLSON '54  
February 25, 2014

JOHN PALAFOUTAS '55  
February 21, 2013

JOAN FLOSTROY SMITH '55  
August 4, 2013

ALEXANDER DUTHIE '56  
December 14, 2013

JOYCE BEVERIDGE KADY '56  
January 30, 2013

WILLIAM RAMSEY '56  
February 1, 2014

NANCY KLIEVES GROVE '57  
November 3, 2012

S. MICHAEL JOHN '57  
December 11, 2012

AILEEN BOOTH KUROWSKI '57  
January 31, 2013

RICHARD LASH '57  
February 4, 2014

GEORGE MILHORN '57  
September 11, 2012

ANITA ALFORD RICHMOND '57  
July 23, 2013

HERBERT LEE STEIN '57  
March 3, 2014

JAMES BEATTY '58  
October 16, 2012

ROBERT L. BRAGG '58  
March 20, 2014

EDWARD WRIGHT '59  
February 5, 2014

SHEPARD BURNETT '60  
January 3, 2013

WILLIAM KROOSS '60  
May 11, 2013

LOUISE HAMLIN METZNER '60  
August 7, 2013

ROLLAND PFILE '60  
August 19, 2013

DAVID STEWART '60  
June 20, 2013

JAMES SCHOLLAERT '61  
February 17, 2013

WILLIAM SUTTON '61  
February 7, 2014

MARK DORLESTER '62  
May 22, 2013

PRISCILLA FINDLAY BAILY '63  
May 31, 2013

SUSAN OGLE DAVIS '63  
December 31, 2012

ROBERT KRAMER '64  
December 7, 2013

DENNIS GALLAGHER '65  
September 23, 2012

GLORY TIMCHAK MCKEAN '65  
March 28, 2013

SIGMUND WUTKIEWICZ '65  
January 11, 2013

SHELLEY BAER '68  
February 24, 2014

PAMELA SHOUP WOOD '68  
March 29, 2013

SUSAN DENNISON CAIN '69  
December 8, 2012

JOHN MORRIS '69  
March 26, 2013

ROSS TENNANT '69  
August 2, 2013

PETER CASSEL '70  
January 23, 2014

ERIC ALEXANDER '71  
October 11, 2012

WILLIAM ORTON '71  
February 16, 2013

TERRY CRAFT '72  
January 2, 2013

JOSEPH WILLIAM MAYERNICK '72  
March 20, 2014

RICHARD MINTEER '73  
June 16, 2013

JAMES BRINKMAN '74  
January 27, 2014

KENNETH LANGFITT '74  
October 14, 2012

MARGARET BLACKFORD HOGAN '75  
March 19, 2014

LAWRENCE WINEKE '75  
September 29, 2013

RICHARD GURICH '77  
December 10, 2012

JOSIENNE NANNEY PILLER '77  
December 16, 2012

DONALD RUCH '77  
September 13, 2013

GUS SANDONAS '77  
September 1, 2013

WILLIAM LISOTTO '79  
March 9, 2014

THOMAS DENNE '81  
July 27, 2013

JAMES LINN '84  
July 21, 2013

HEATHER BROWN SENSIBAUGH '05  
July 27, 2013

## Keep in touch with Bethany



The official Bethany College app has been released and is available for download on iPhone, iPod touch, and iPod (requires iOS 3.1 or later) as well as with any Android device. The app features Bethany College news and events, a campus map, athletics coverage, twitter feeds, and other breaking updates. It also allows users to browse the College's YouTube videos and photo galleries, download Bethany College phone wallpapers, and much more.

To download the app, visit the iTunes app store: <http://itunes.apple.com/us/app/bethany-college/id533513139?mt=8>.  
Or the Google Play Store for Android devices at:  
<https://play.google.com/store/apps/details?id=com.u360mobile.bethany>

For the latest news on the College, events and your fellow alumni, visit [bethanywv.edu](http://bethanywv.edu) or go directly with this link:



### TWITTER

Follow Bethany College and President **SCOTT D. MILLER** on Twitter at **TWITTER.COM**. Get an inside glimpse into what takes place on a daily basis at Bethany College. Follow the College at **BETHANY\_COLLEGE** and follow Dr. Miller at **BETHANYCOLLEGE1**. You might be surprised by all that occurs on "The Banks of the Old Buffalo."

### SIGN UP FOR THE OLD MAIN JOURNAL

The Old Main Journal, a weekly newsletter sent electronically, will keep you up-to-date on campus happenings.

To register to receive the Old Main Journal, visit **WWW.BETHANYWV.EDU/INDEX.PHP?CID=2335**.

### E-SCORES

You can sign up to receive Bethany Athletic results via e-mail or text message the day of the event. It's an easy process; just follow the link below and sign up. It's a great way to keep yourself up to date on Bethany's athletic progress. **ESCORES.STRETCHINTE.NET.COM/LOGIN.PHP?SCH=BETHANYWV**



Bethany College  
Bethany, WV 26032-0417

ADDRESS SERVICE REQUESTED

Non-Profit Org.  
U.S. Postage  
**PAID**  
Cleveland, OH  
Permit No. 1702



## Leave a Lasting Impression

This issue of **Bethany Today** highlights the lasting influence of mentors and mentoring.

**SOMETHING ELSE LASTS A LONG TIME AT BETHANY, AS WELL—YOUR GIFT TO THE BETHANY FUND.**

From funding new student scholarships and faculty research opportunities, to keeping our beautiful campus in top condition, gifts to The Bethany Fund go a long way toward helping the College stay competitive for years to come.

Having a healthy percentage of alumni donors also serves us in the national collegiate rankings. Your financial support enables Bethany to maintain its reputation as a **LEADING NATIONAL LIBERAL ARTS COLLEGE**—and inspires additional funding sources who follow the lead of alumni and friends who give.

We're looking for a **RECORD NUMBER OF ALUMNI DONORS** this year to Bethany, and we need your participation.

Every gift to The Bethany Fund, regardless of amount, is appreciated and valued. **REMEMBER, THE FACT THAT YOU GIVE IS NEARLY AS IMPORTANT AS THE AMOUNT.** Leave your lasting impression with a gift to The Bethany Fund. You'll want to be a part of our success as A Small College of National Distinction.

Give online, safely and conveniently, by visiting [www.bethanywv.edu/give](http://www.bethanywv.edu/give). Or simply mail your check payable to Bethany College to Bethany College, Office of Institutional Advancement, Bethany, WV 26032.

## THANK YOU

for your generous support of Bethany College!